



EHILAN

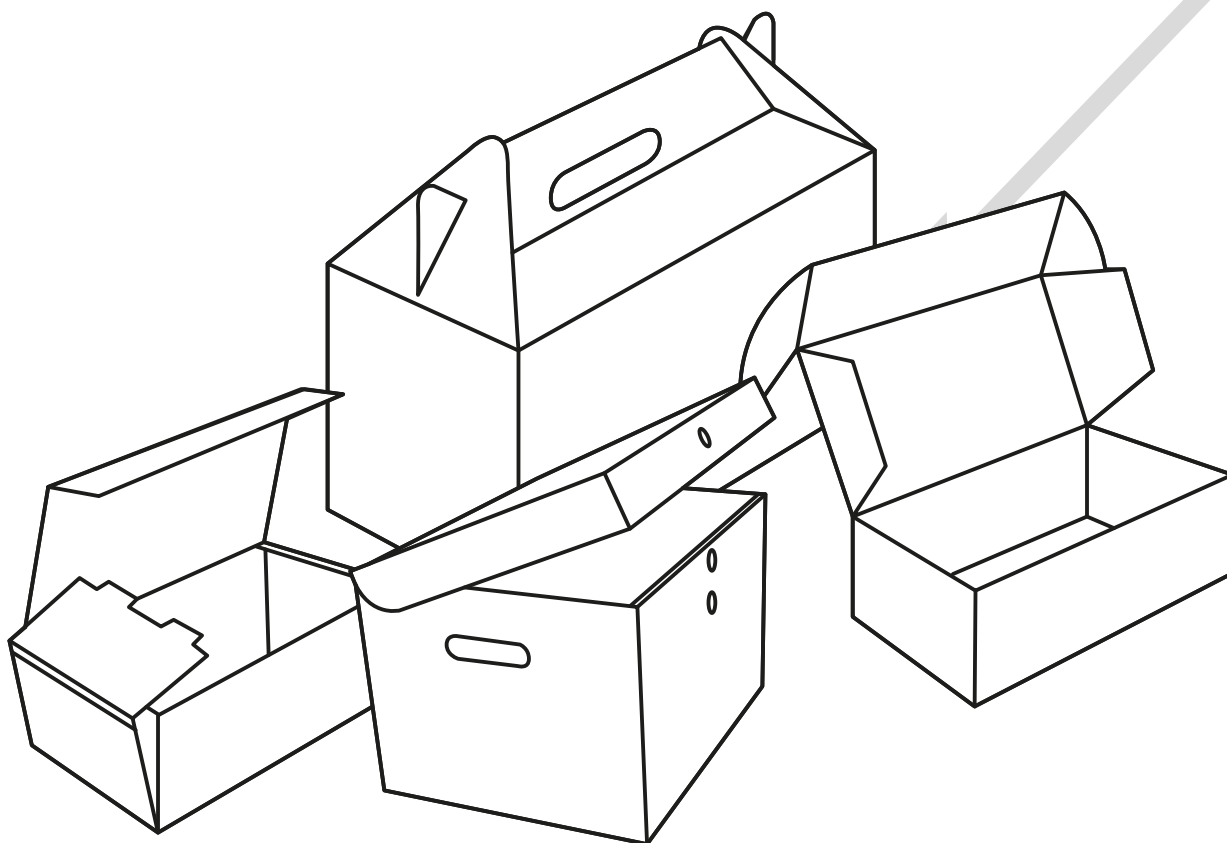
Design

Catálogo

de productos



Soluciones
a la medida





Seguridad

para tus productos



Almacenar



Transportar



Guardar



Agrupar



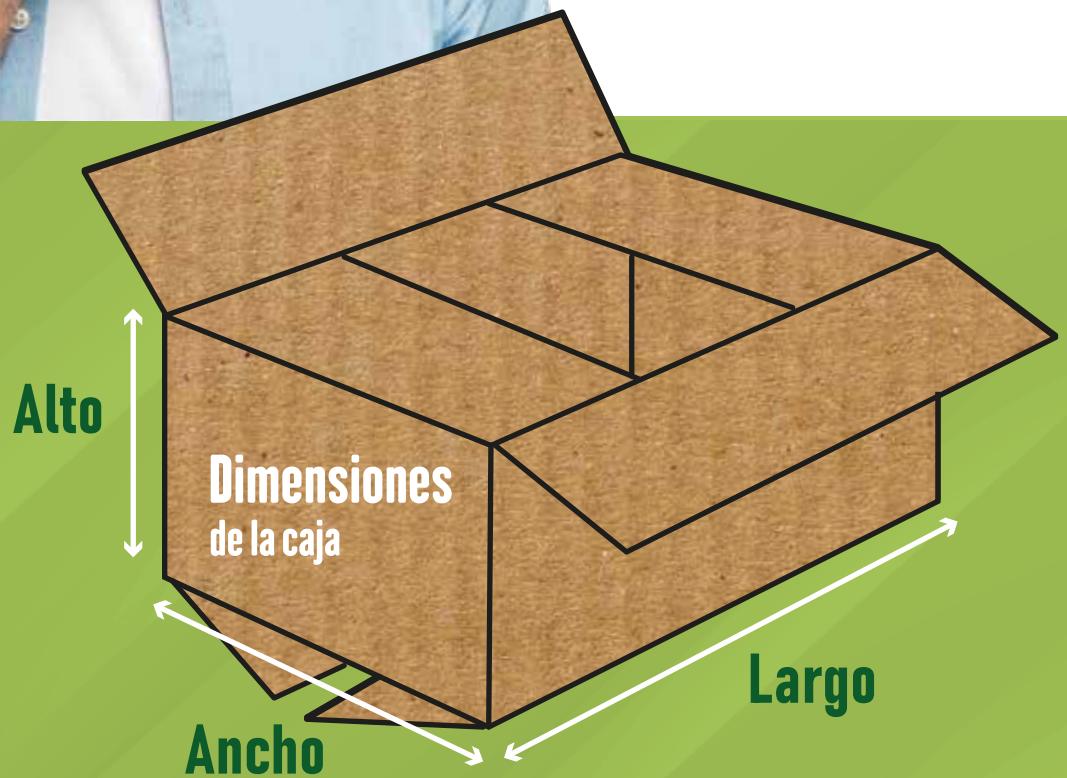
Proteger



¿Qué tipo de caja necesitas?

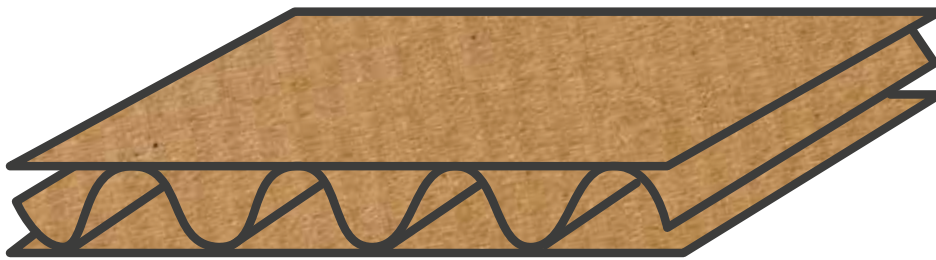
¿Qué medida necesitas?

¿Qué espesor?



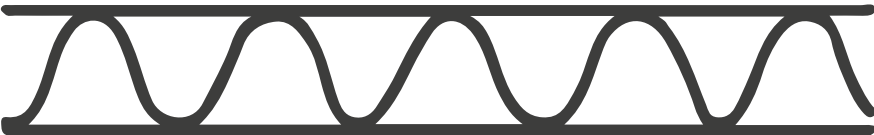




Resistencia del cartón según su
onda y espesor

Cartónes corrugados



Y micro corrugados

Tipos de onda

| | | |
|---|--|--------|
| A |  | 5,5 mm |
| C |  | 4 mm |
| B |  | 3 mm |
| E |  | 1,7 mm |
| F |  | 1,1 mm |

Código internacional para cajas de cartón ondulado



Este código ha sido desarrollado por FEFCO y ESBO, como sistema oficial, para sustituir largas y complicadas descripciones verbales de cajas de cartón ondulado y diseños, por símbolos sencillos de comprensión internacional, sin atender al lenguaje u otras diferencias.

Estas referencias pueden emplearse en pedidos y especificaciones de cajas de cartón ondulado para embalaje.

Sólo FEFCO y ESBO están autorizados hacer adiciones y modificaciones.

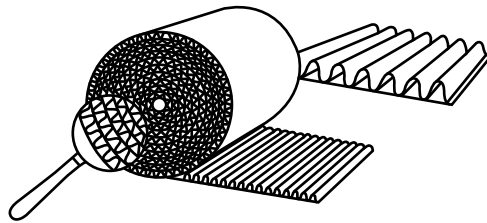
Símbolos empleados en planos y sistemas informáticos

| Símbolo dibujado | Código Ordenador | Descripción |
|---------------------------------|------------------|--|
| Cuts, scores, slits etc. | | |
| | CL | Contorno de cajas armadas o líneas de corte en plancha |
| | SC | Cortes ranurados |
| | CI | Líneas de hendido (plegado hacia el interior) |
| | CO | Líneas de hendido (plegado hacia el exterior) |
| | SI | Líneas de corte-hendido (plegado hacia el interior) |
| | SO | Líneas de corte-hendido (plegado hacia el exterior) |
| | DS | Líneas de doble hendido |
| | PL | Líneas de perforado |
| | SE | Líneas de corte intermitente |
| | TP | Perforación para desgarrar |
| Junta de fabricación | | |
| | SJ | Grapada |
| | TJ | Encintada |
| | GJ | Encolada |
| Aperturas | | |
| | PC | handholds stripped |
| | UC | Asas parcialmente recortadas |
| | NC | Asas parcialmente recortadas |
| Dirección de la onda | | |
| | FD | Indicador de la dirección de la onda |

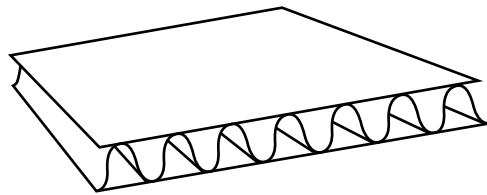
0100

Rollos y planchas comerciales

0100



0110

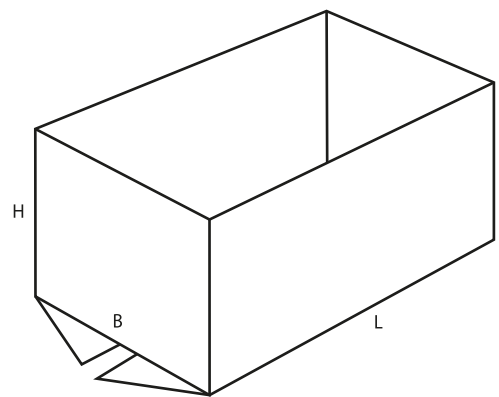
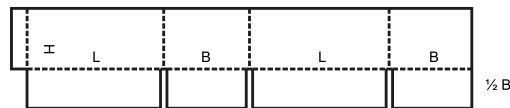


0200

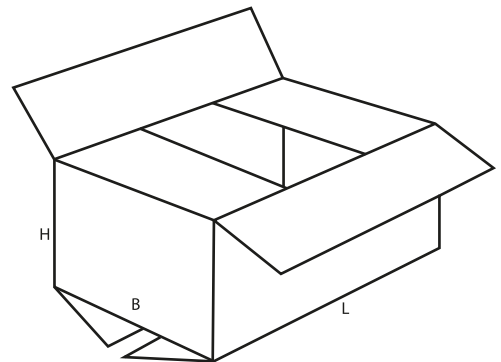
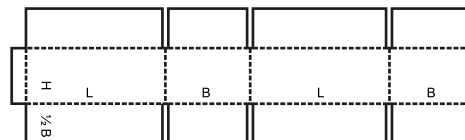
Cajas de tipo ranurado : consisten básicamente en una pieza con juntas de fabricación encolada, cosida o pegada con cinta y solapas superiores e inferiores.

Se despachan extendidas en un plano, listas para su uso y se cierran utilizando las solapas superiores e inferiores.

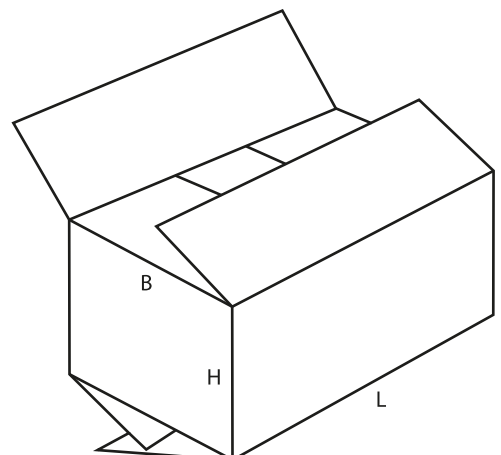
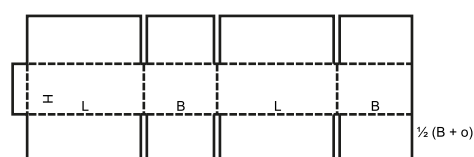
0200 M/A



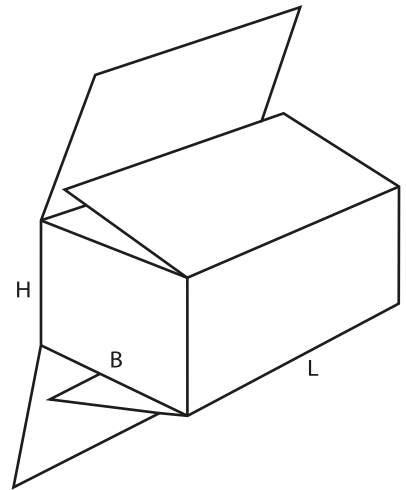
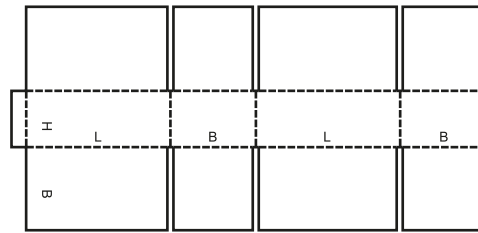
0201



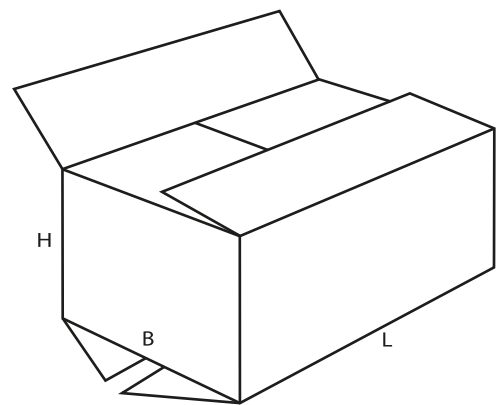
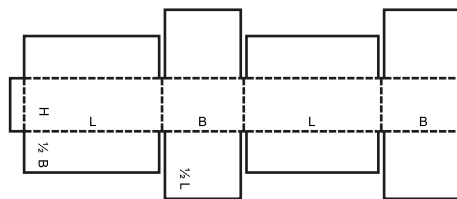
0202



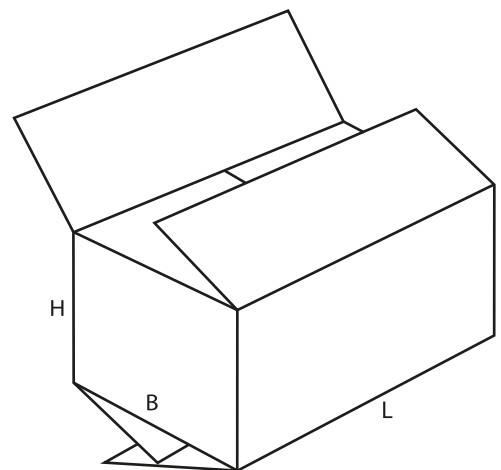
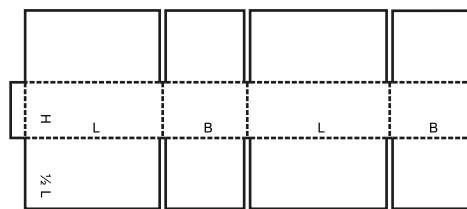
0203 M/A



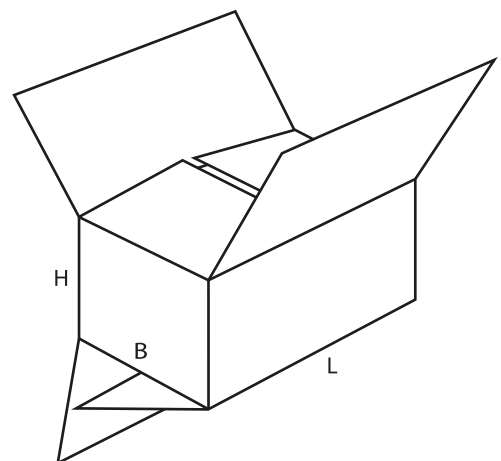
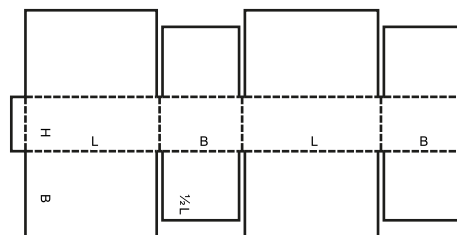
0204 M/A



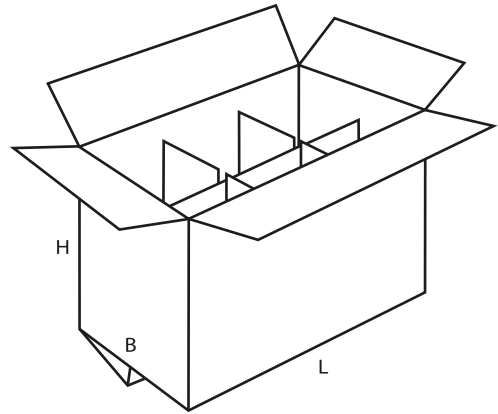
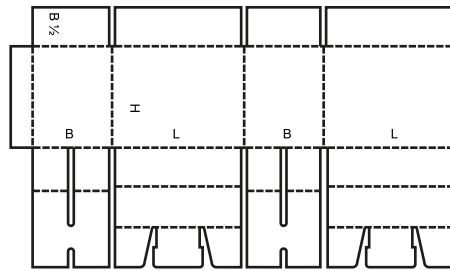
0205 M/A



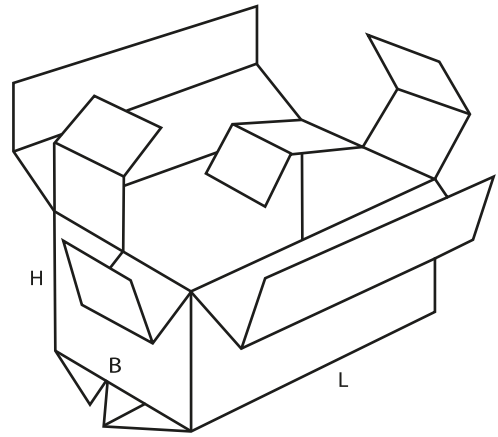
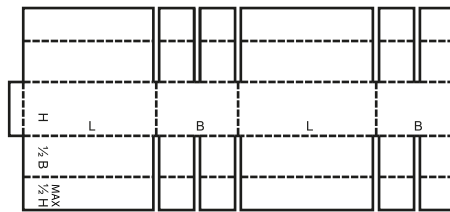
0206 M/A



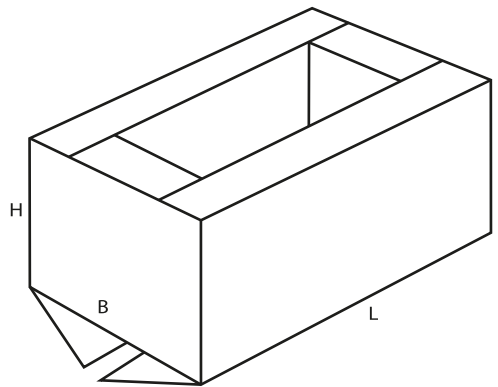
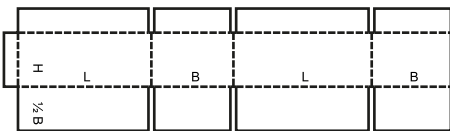
0207 M



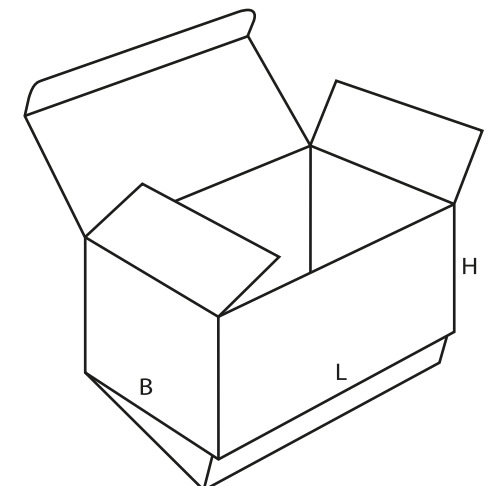
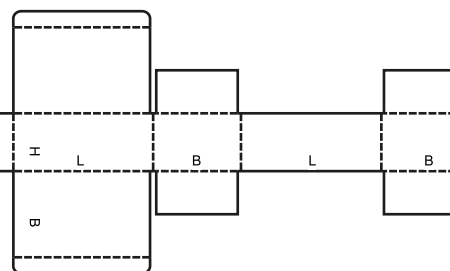
0208 M



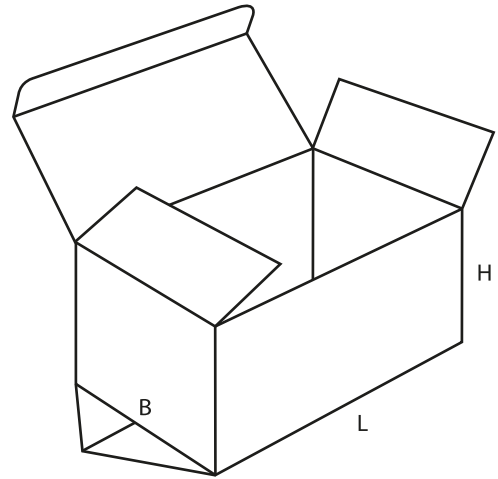
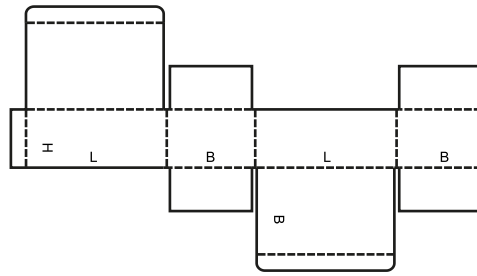
0209 M/A



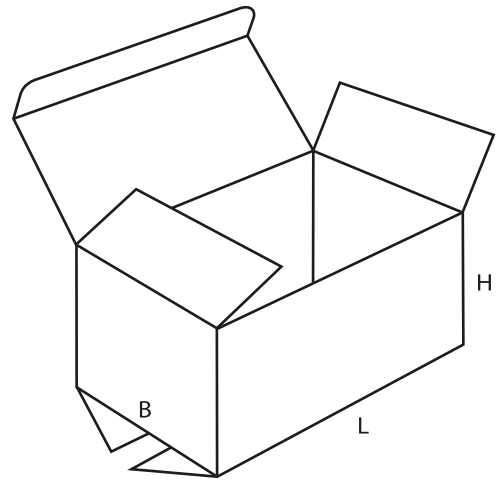
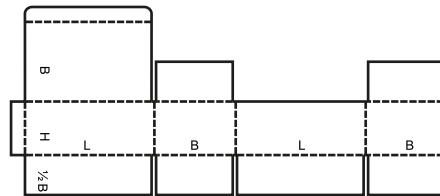
0210 M



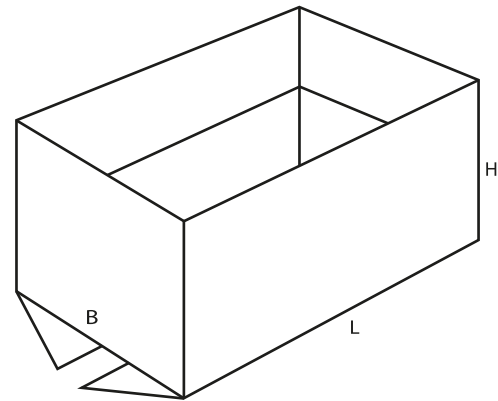
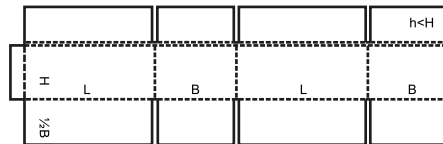
0211 M



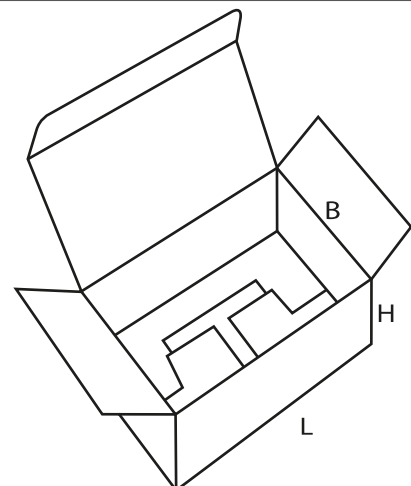
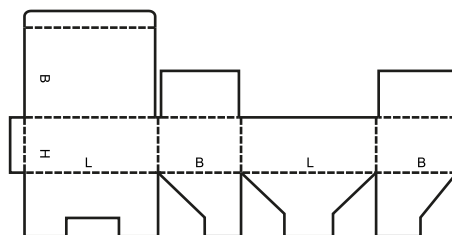
0212



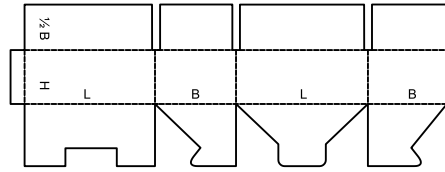
0214 M



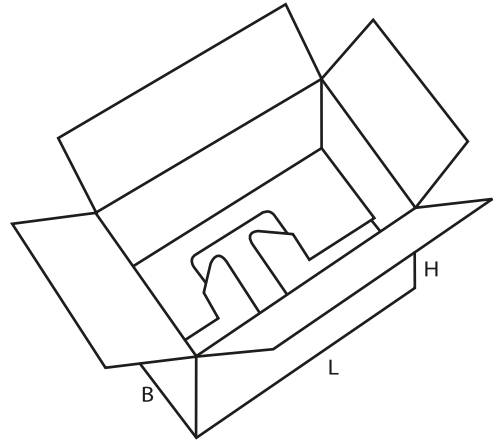
0215 M



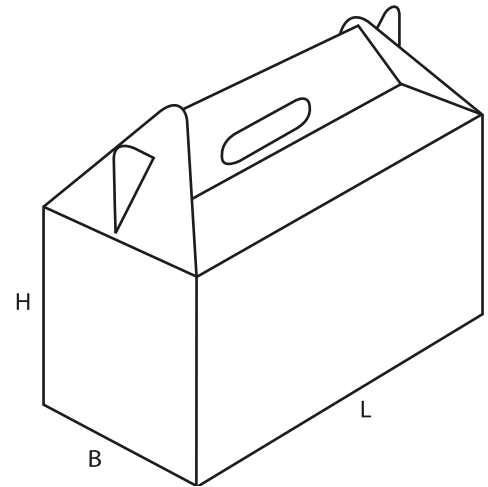
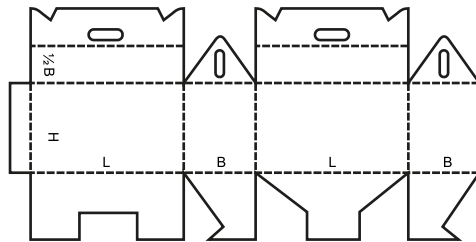
0216 M



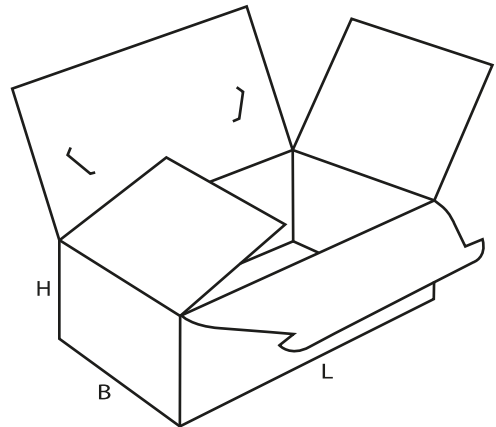
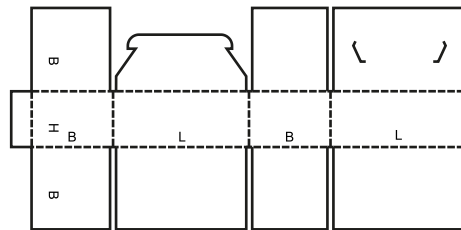
closure of top can be automated
 la fermeture du dessus peut être automatisée
 Der Verschluss des Aufsatzes kann automatisiert werden



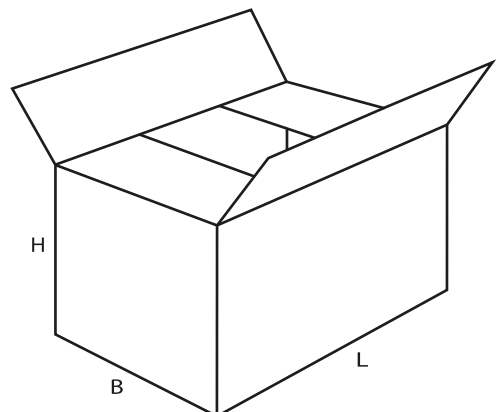
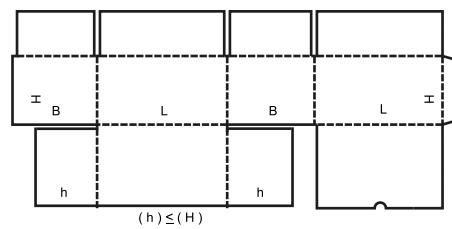
0217 M



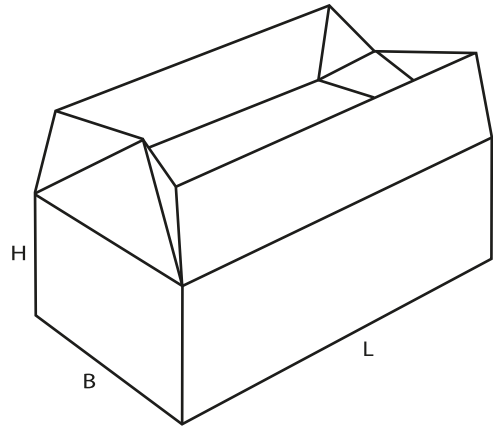
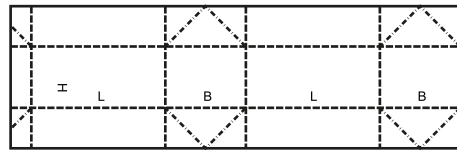
0218 M



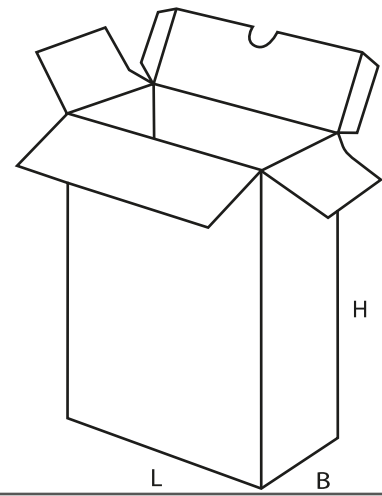
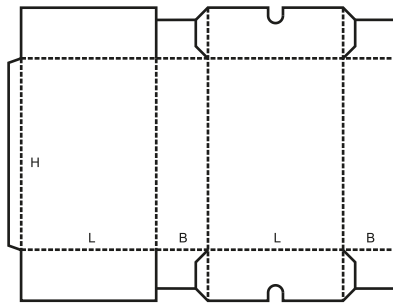
0225 M



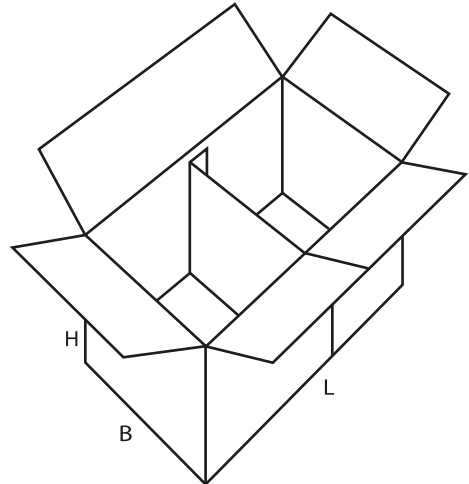
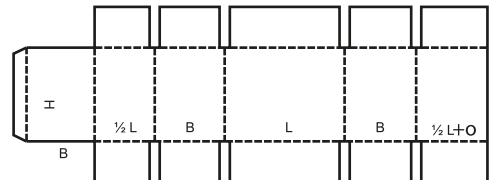
0226 M



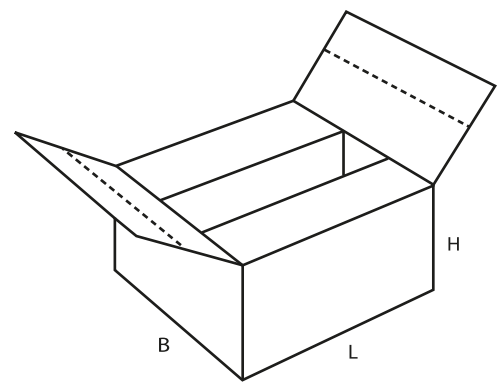
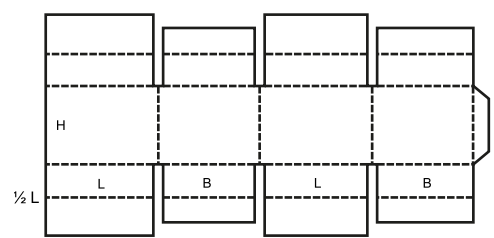
0227 M



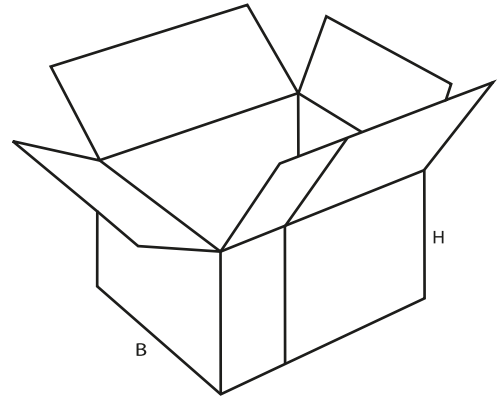
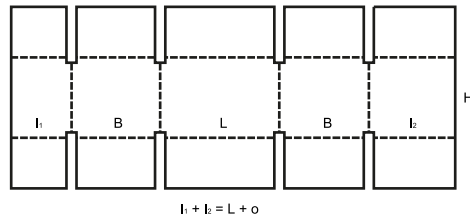
0228



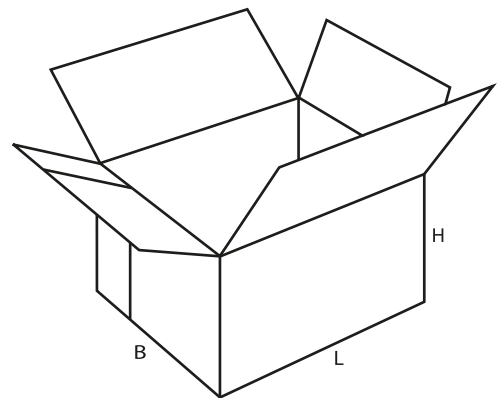
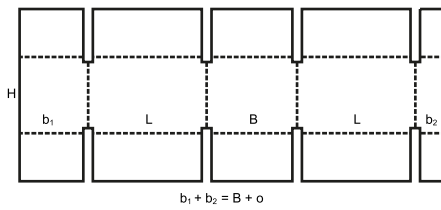
0229 M



0230 M/A



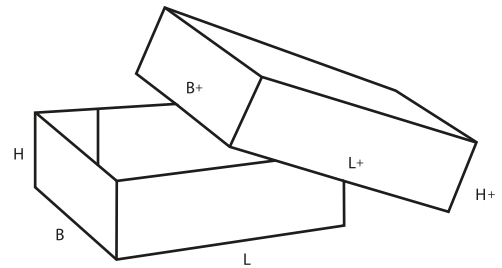
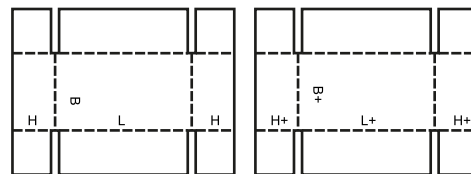
0231 M/A



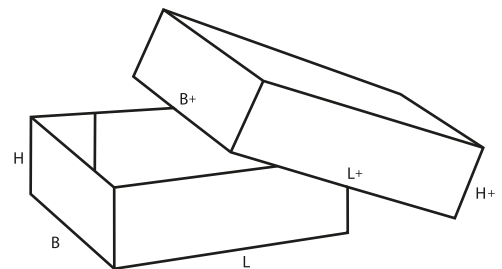
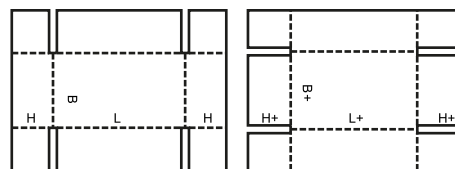
0300

Cajas telescópicas : fabricada con más de una pieza, se caracterizan por una tapa y/o fondo que se desliza sobre el cuerpo de la caja.

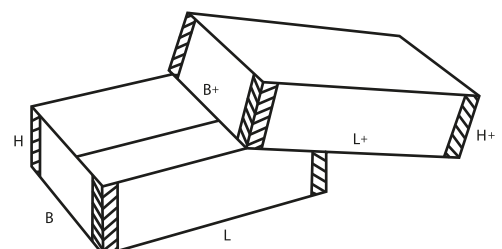
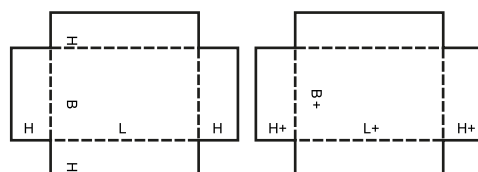
0300 M/A



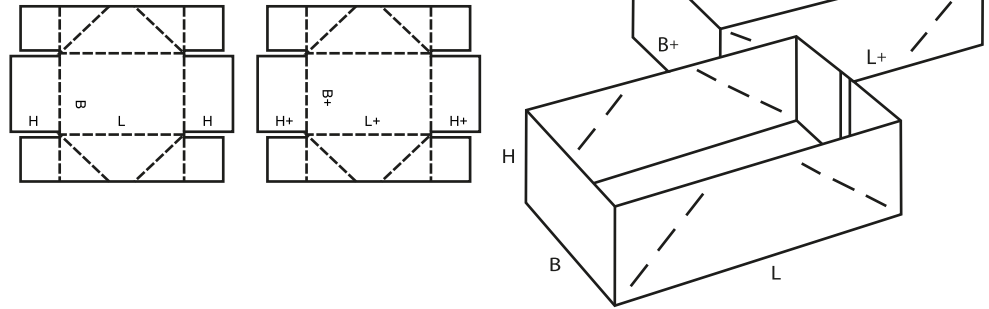
0301 M/A



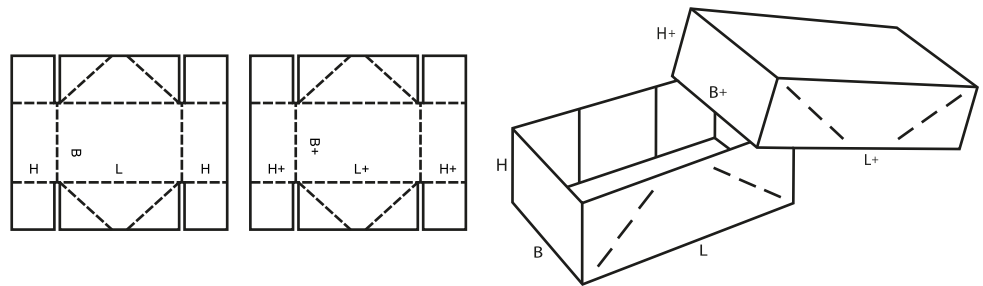
0302 M



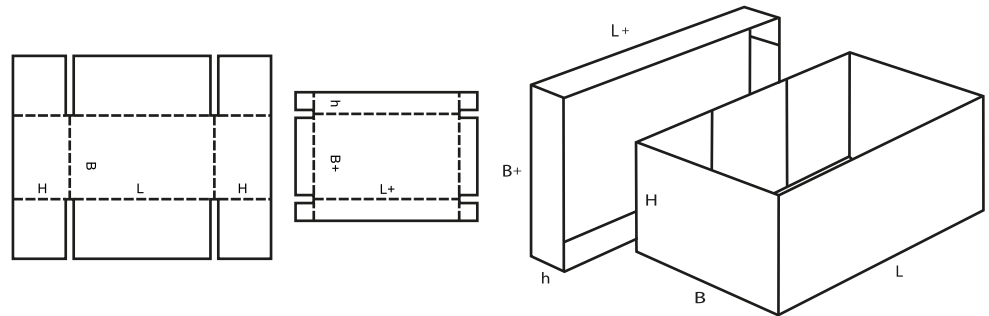
0303 M



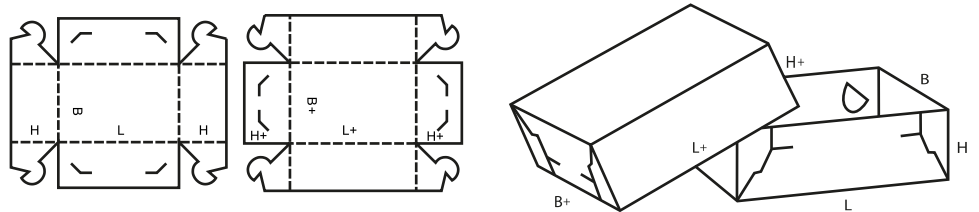
0304 M



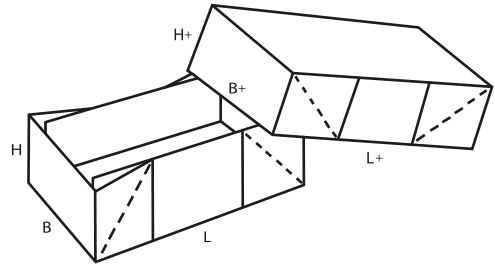
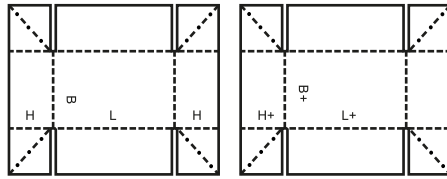
0306 M/A



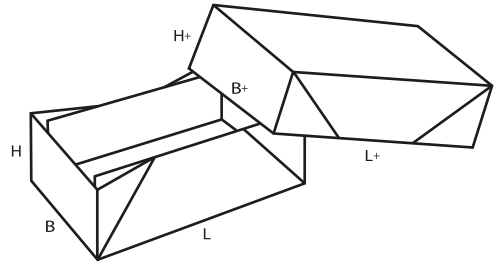
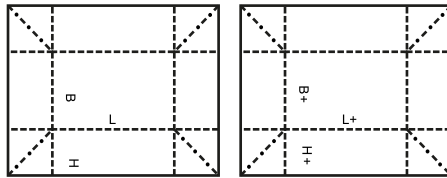
0307 M



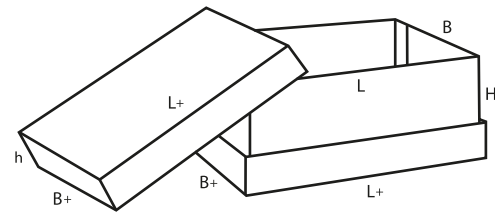
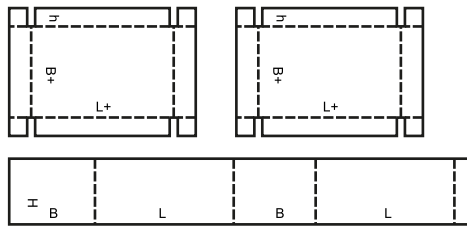
0308 M



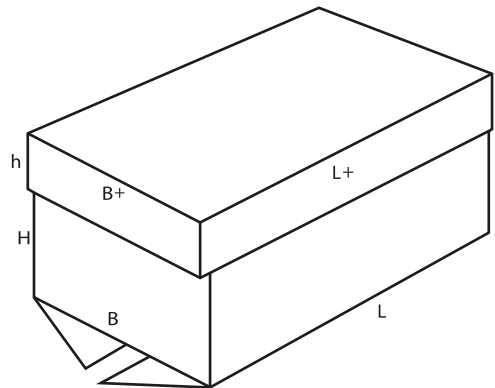
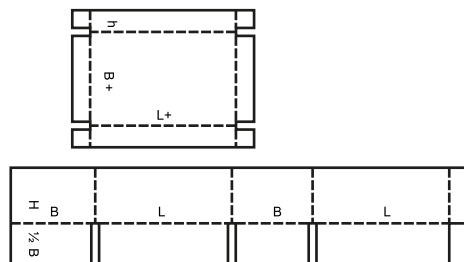
0309 M



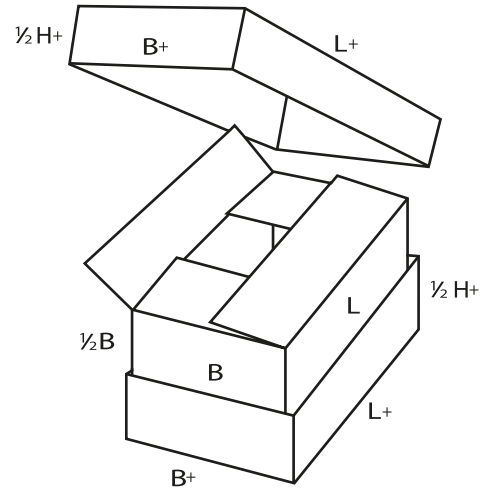
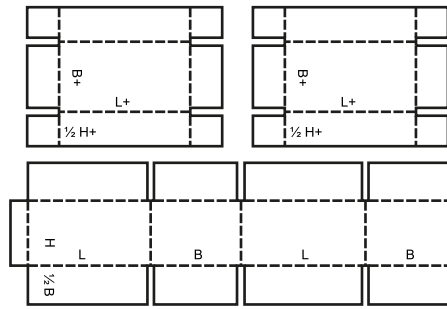
0310 M+A



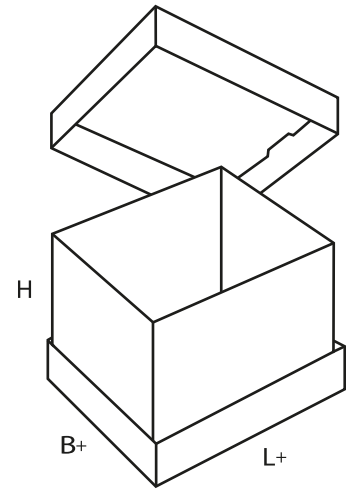
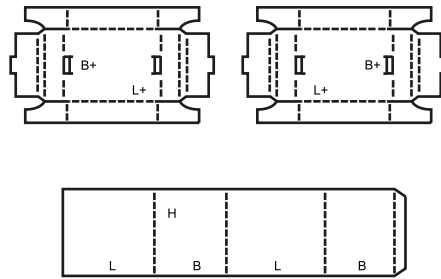
0312 M/A



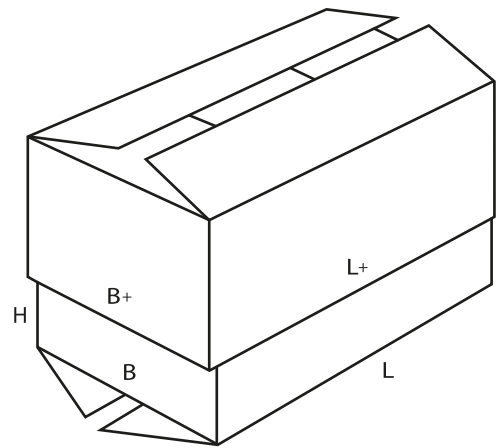
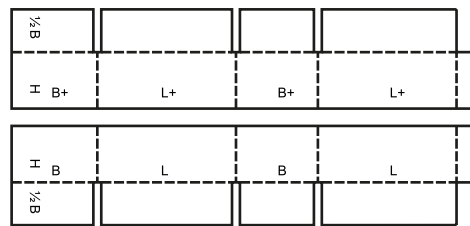
0313 M/A



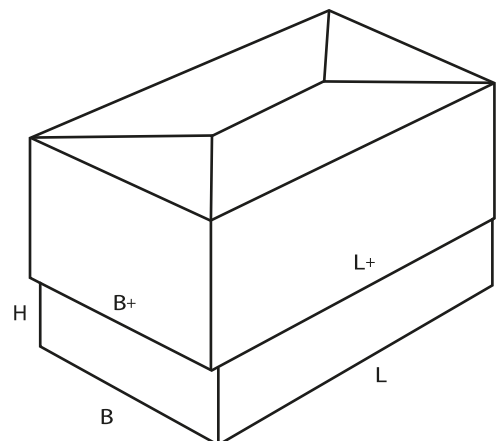
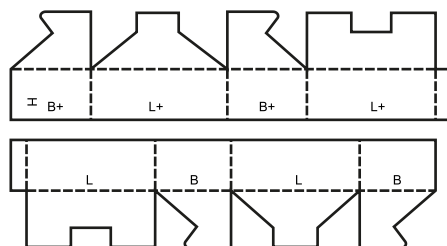
0314 M



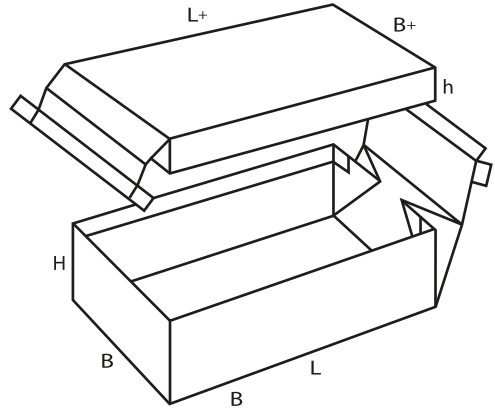
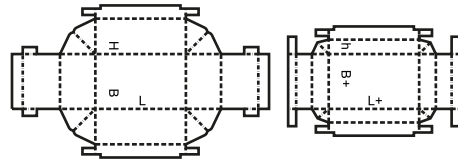
0320 M/A



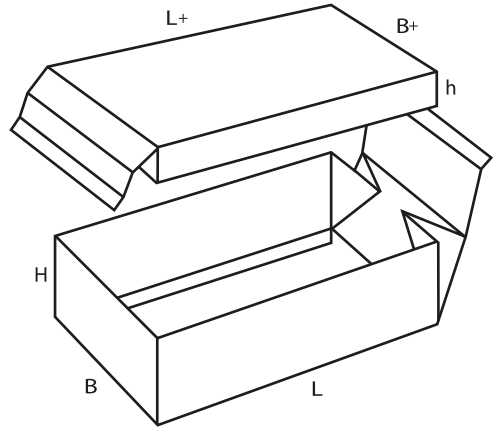
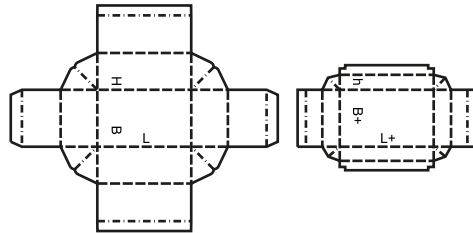
0321 M



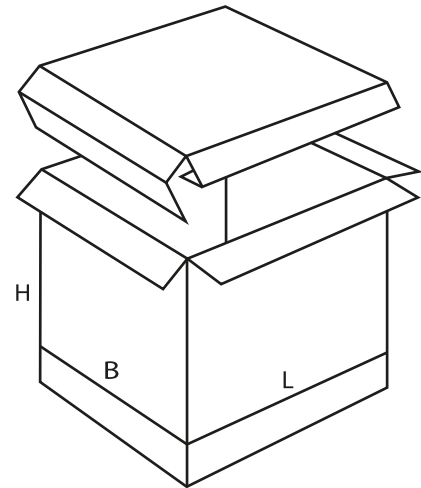
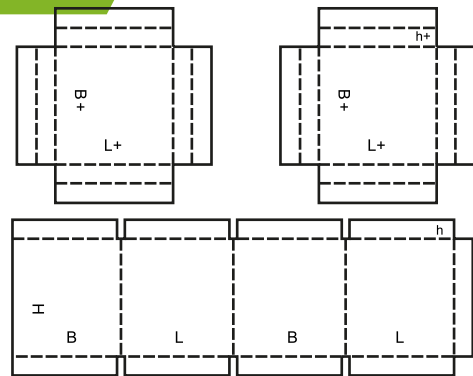
0322 M



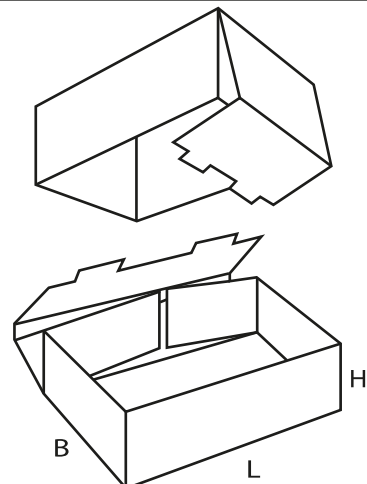
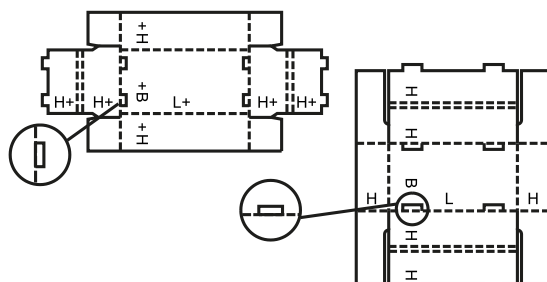
0323 M



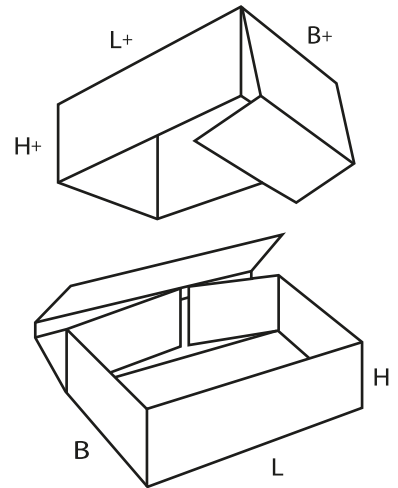
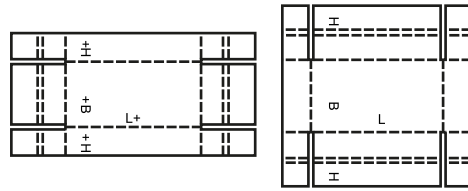
0325 A



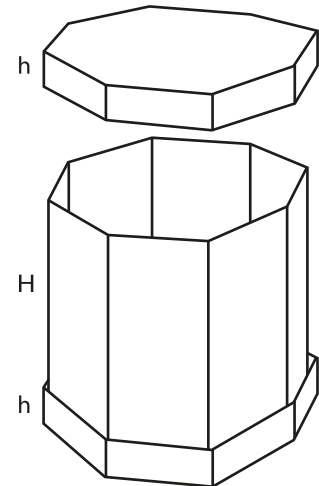
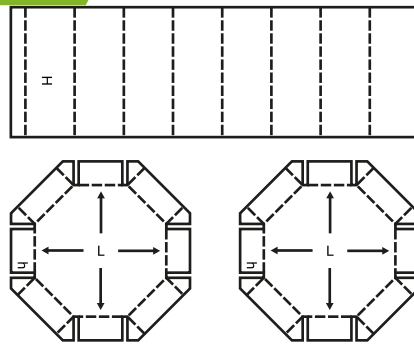
0330 M/A



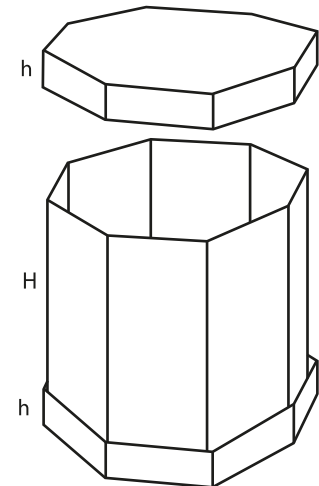
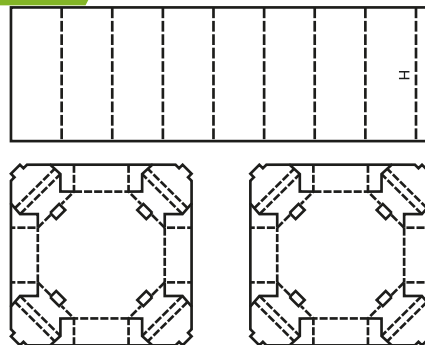
0331 M/A



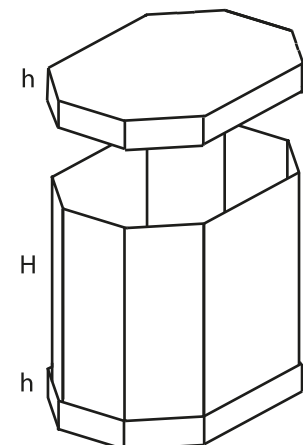
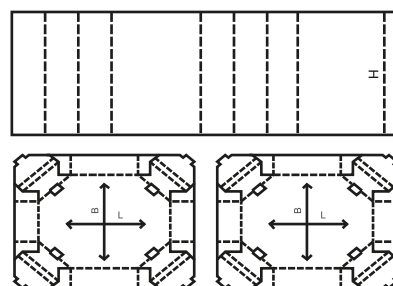
0350 M



0351 M/A

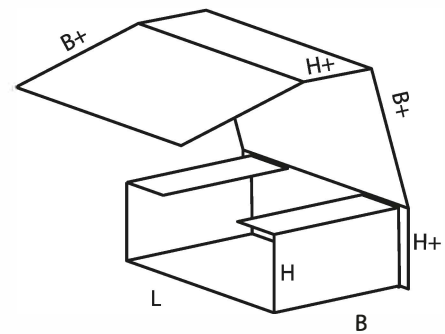
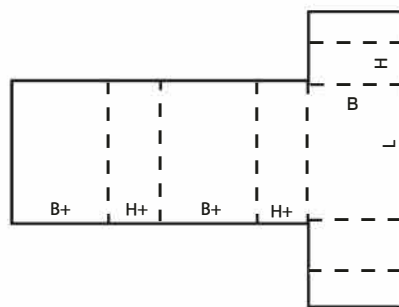


0352 M/A

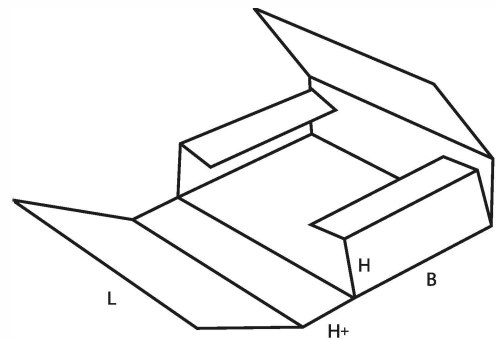
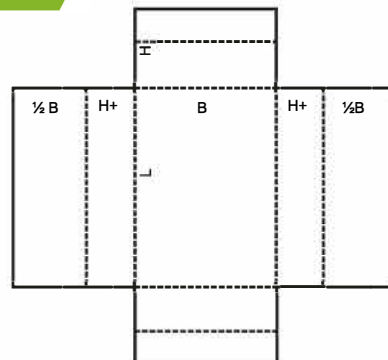


Cajas plegables : son en general de una única pieza de cartón ondulado. El fondo de la caja se pliega para formar dos, o todas las paredes laterales, y la tapa. Pueden incorporarse al diseño elementos de cierre, asas, paneles expositores, etc.

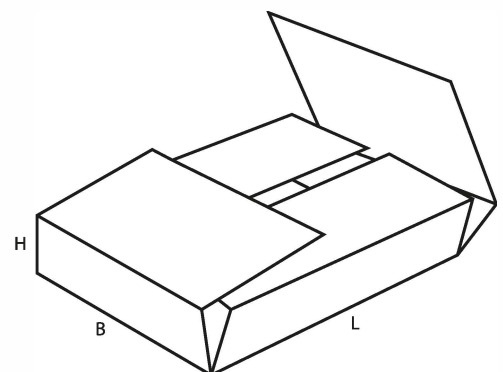
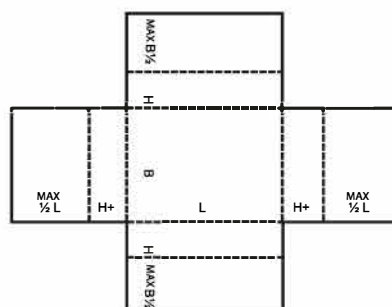
0400 M



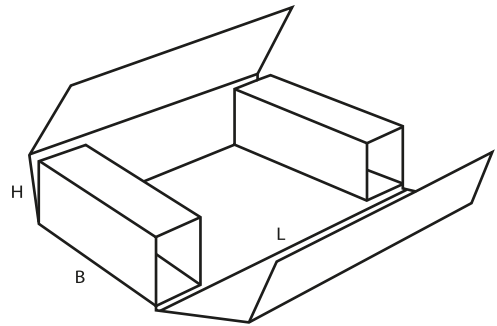
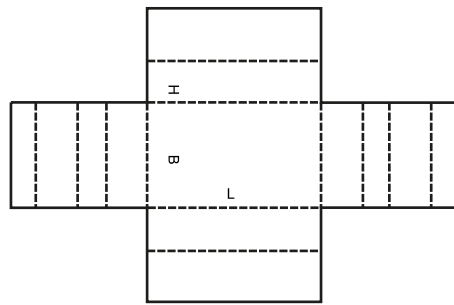
0401 M



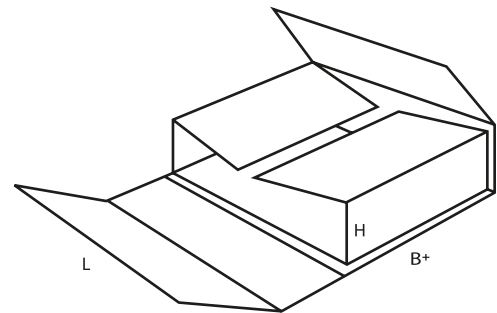
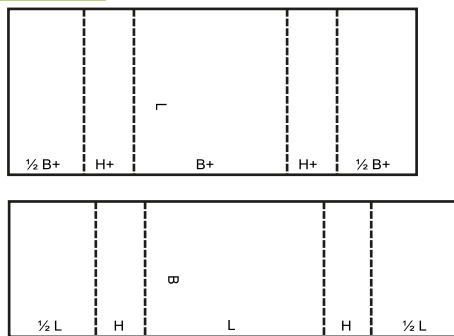
0402 M



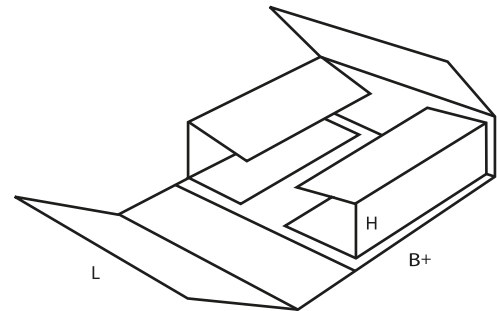
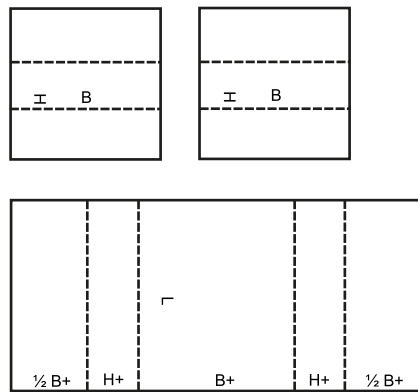
0403 M



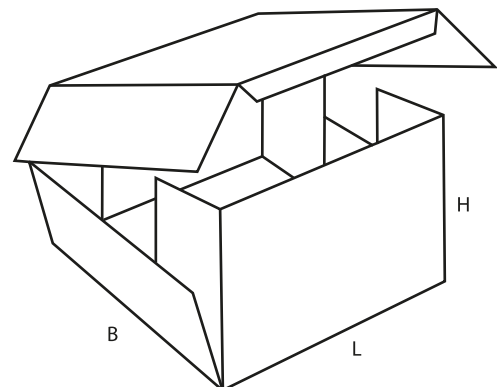
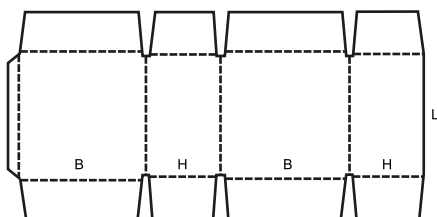
0404 M



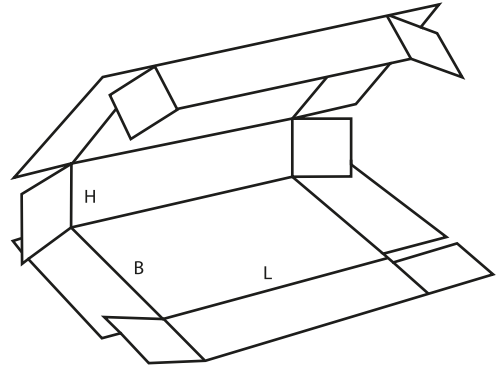
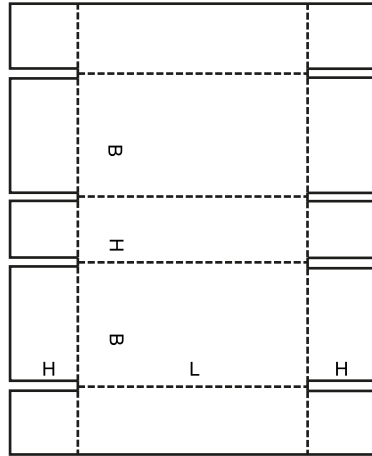
0405 M



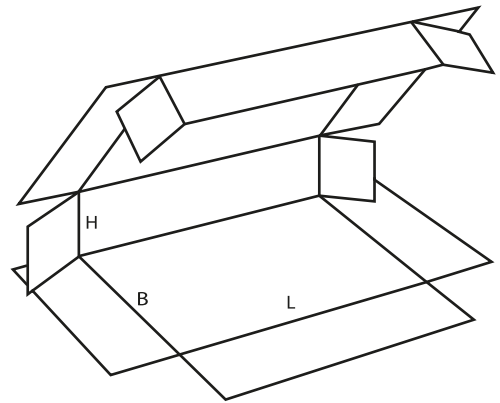
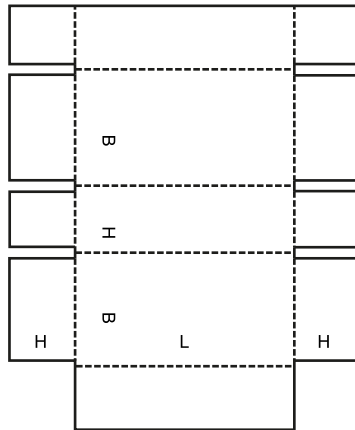
0406 A



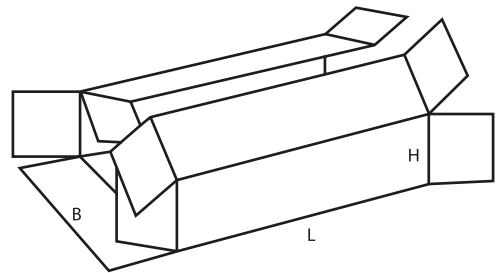
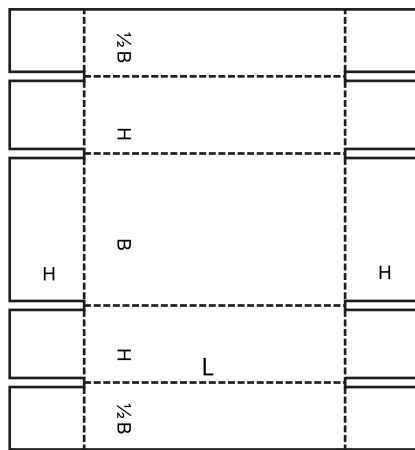
0409 M



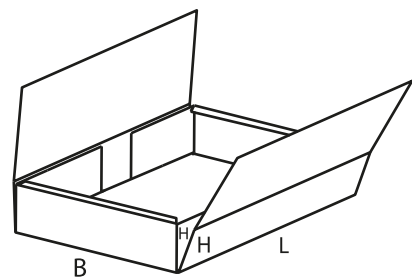
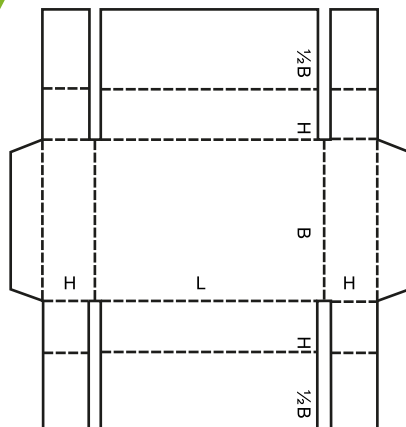
0410 M/A



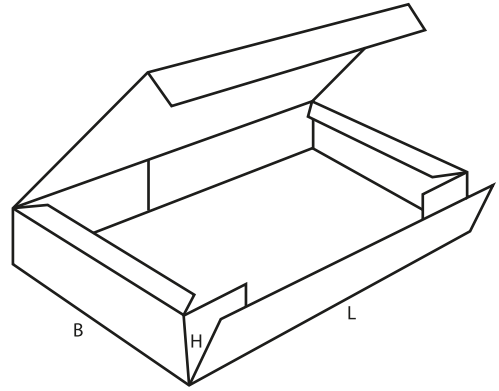
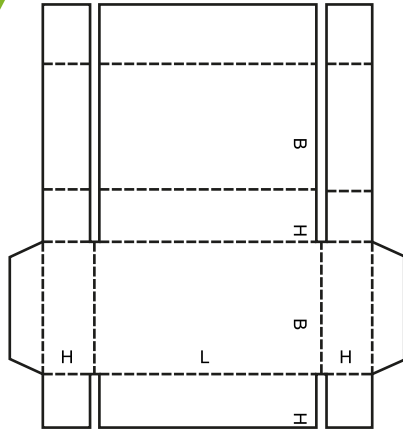
0411 M/A



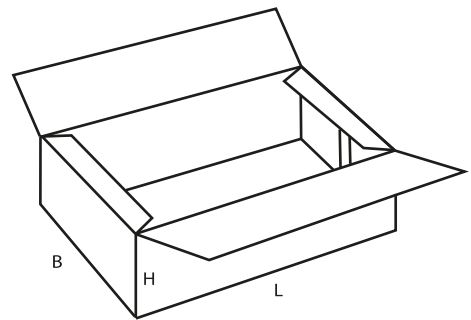
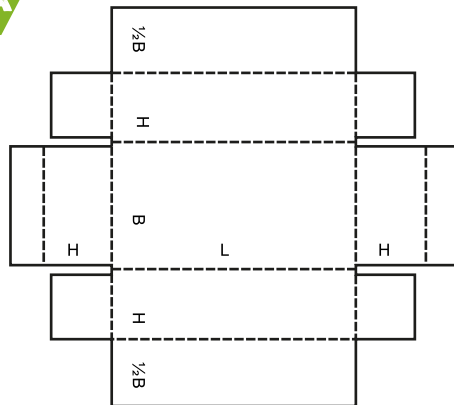
0412 M



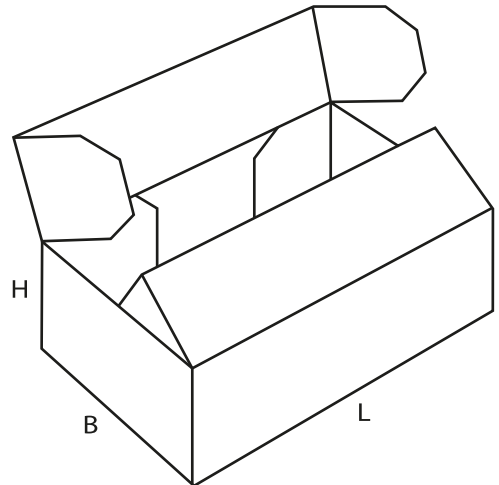
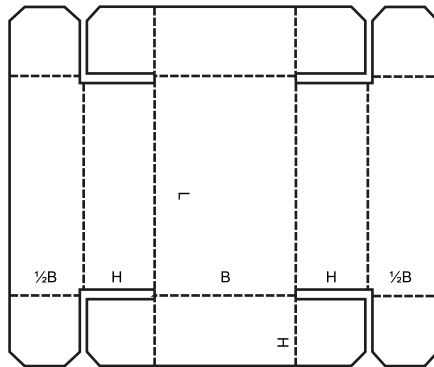
0413 M/A



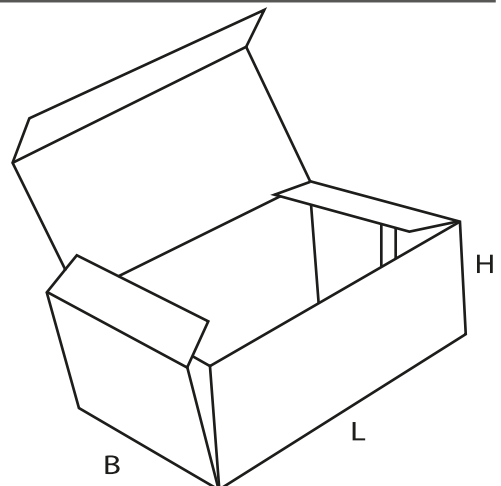
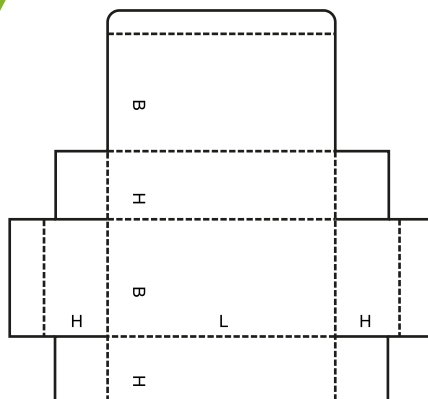
0415 M/A



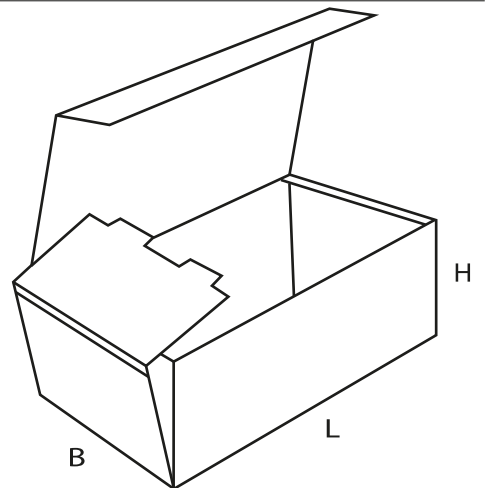
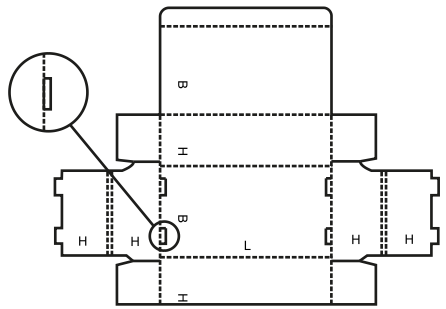
0416 M



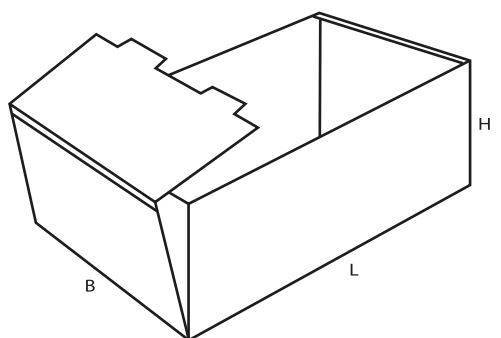
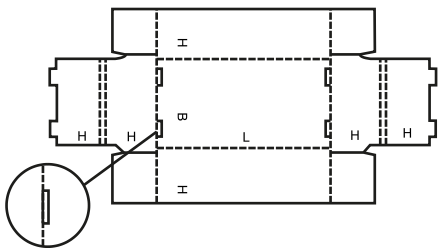
0420 M/A



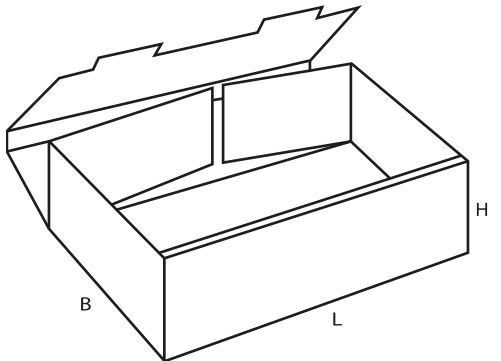
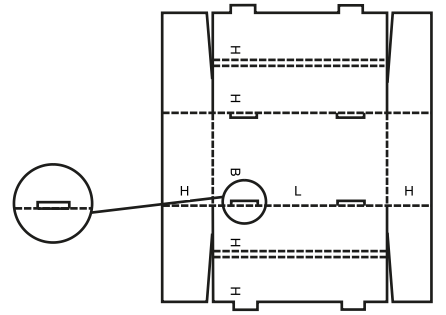
0421 M/A



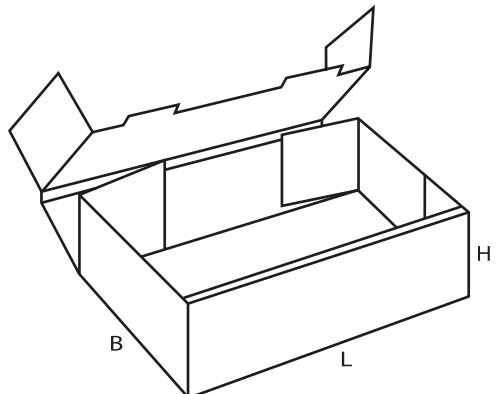
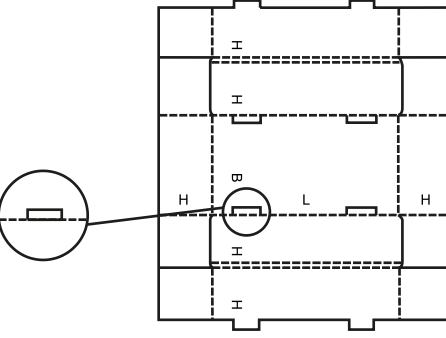
0422 M/A



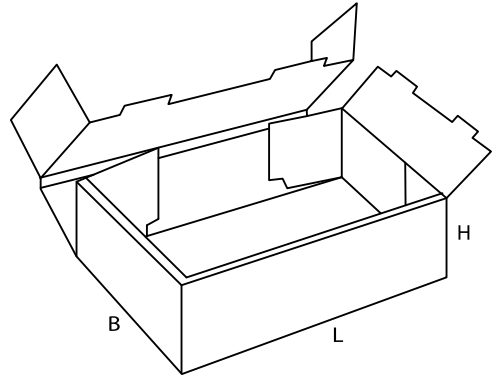
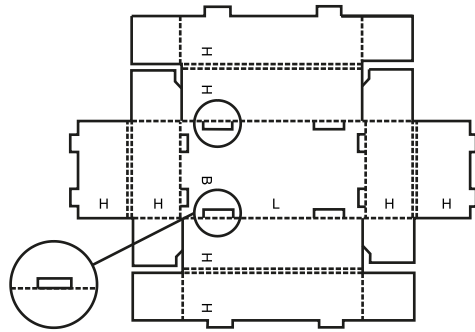
0423 M/A



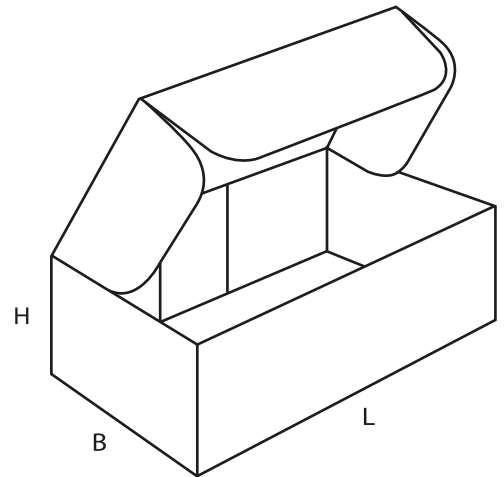
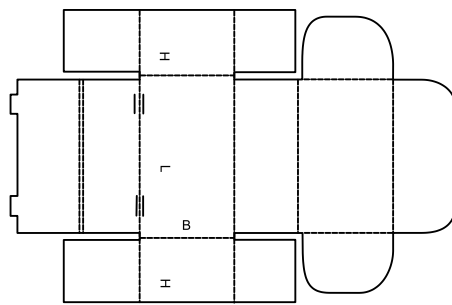
0424 M/A



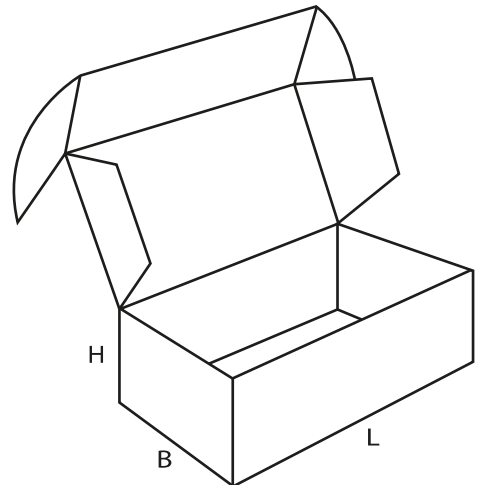
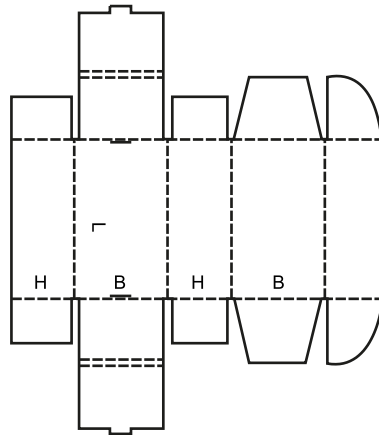
0425 M/A



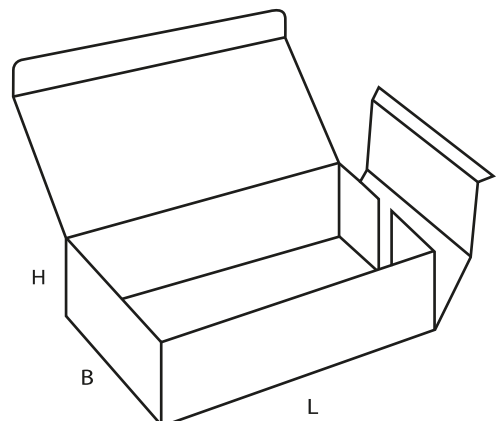
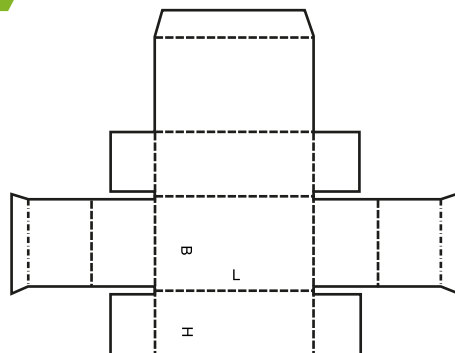
0426 M



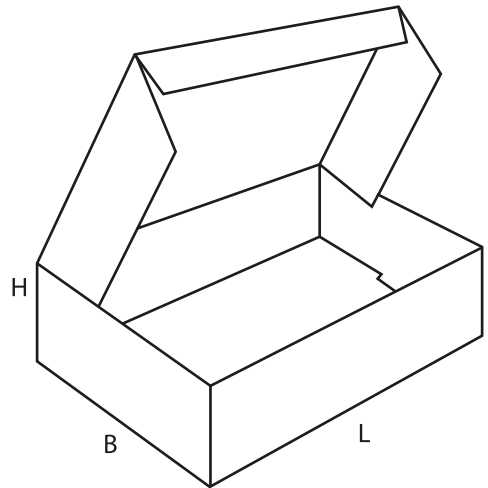
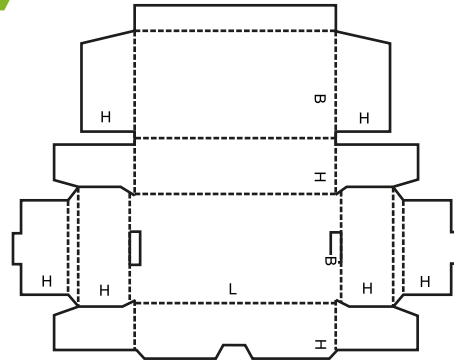
0427 M



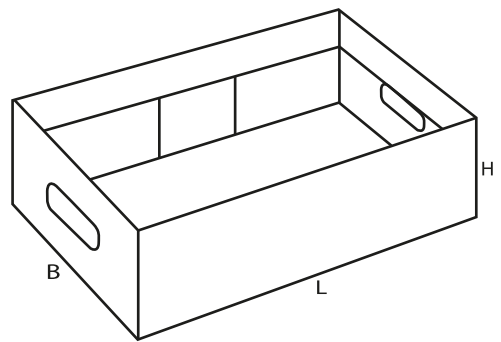
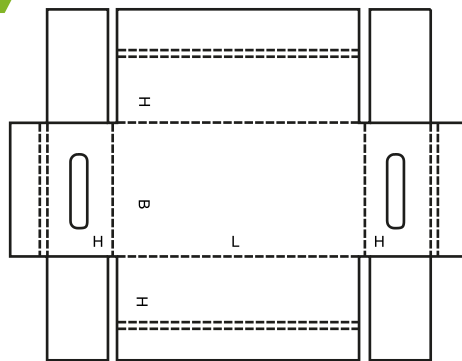
0428 M



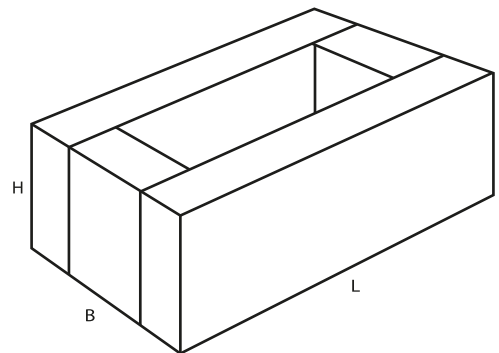
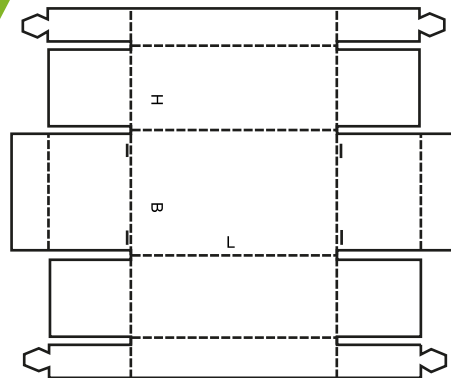
0429 M



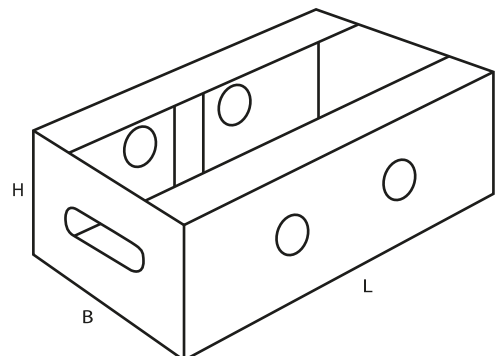
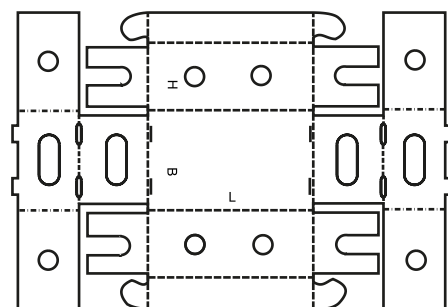
0430 M/A



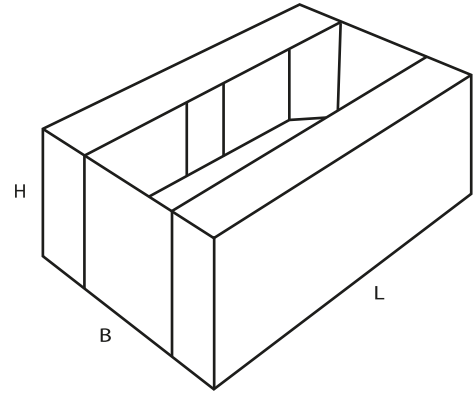
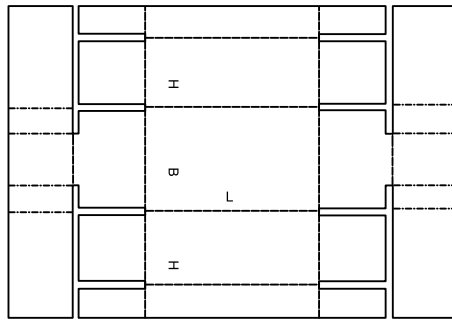
0431 M



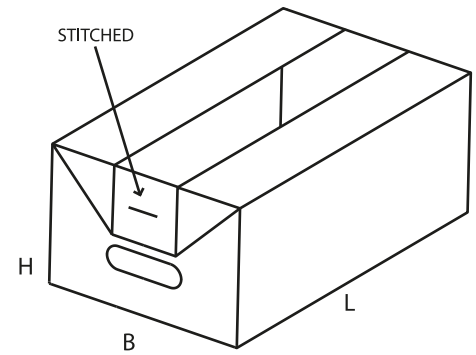
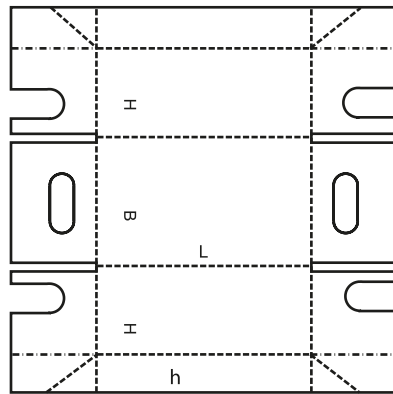
0432 M



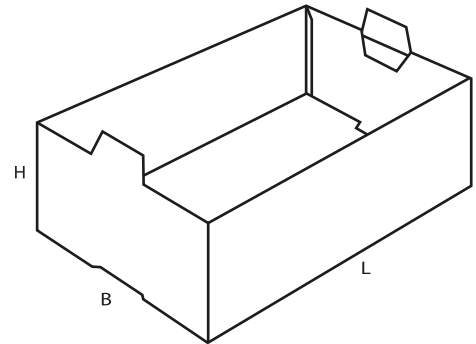
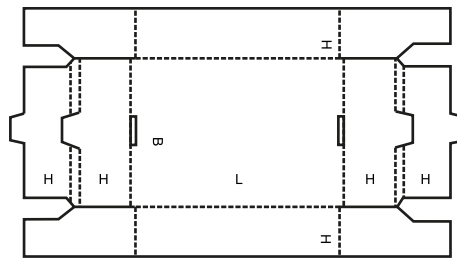
0433 M



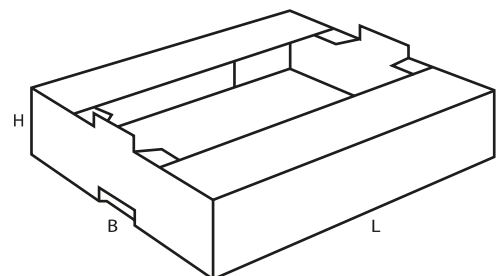
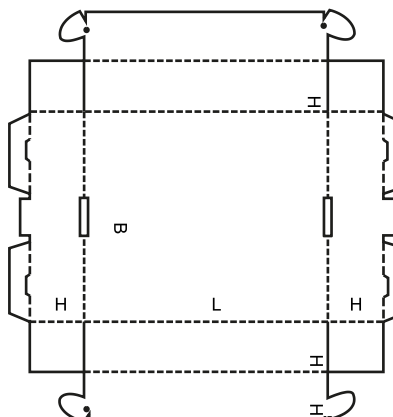
0434 M



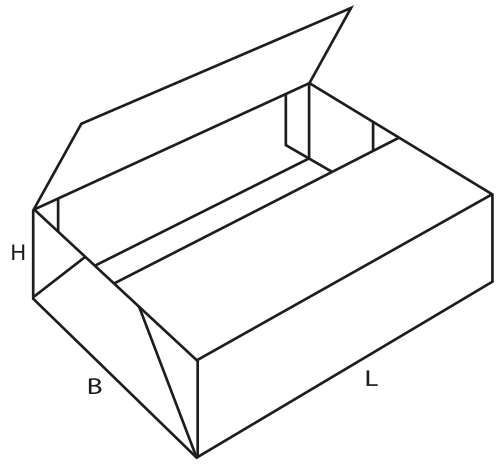
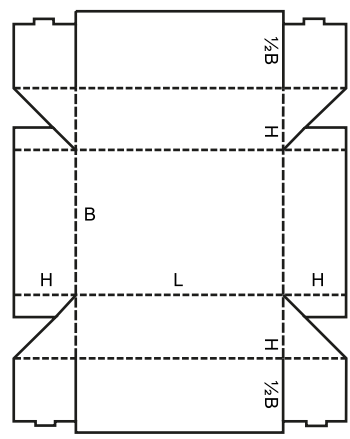
0435 M/A



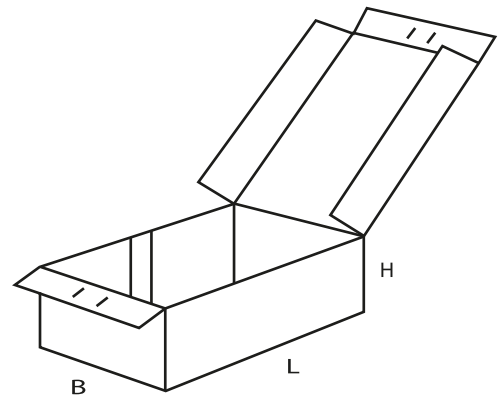
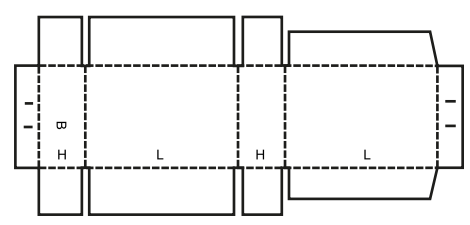
0436 M



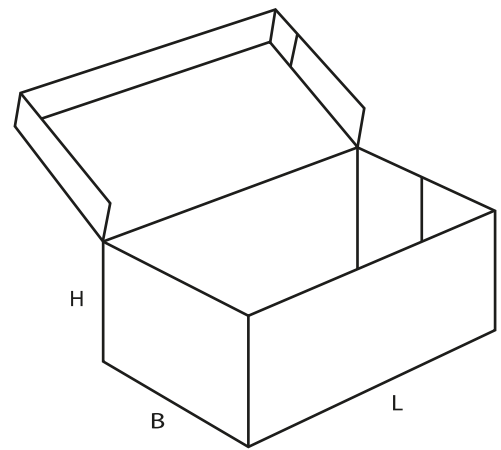
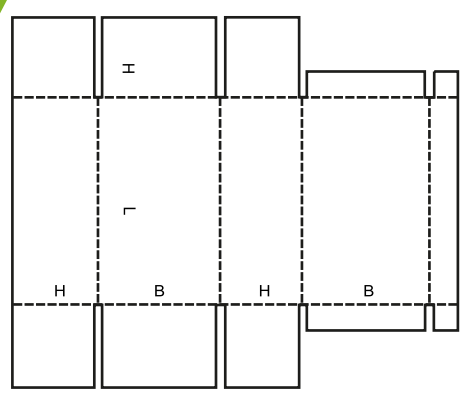
0437 M



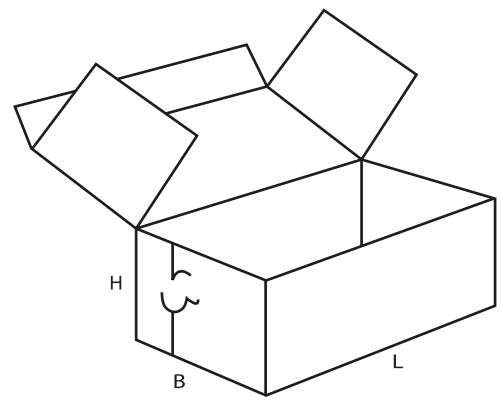
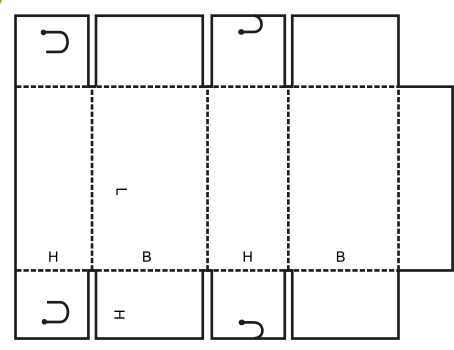
0440 A



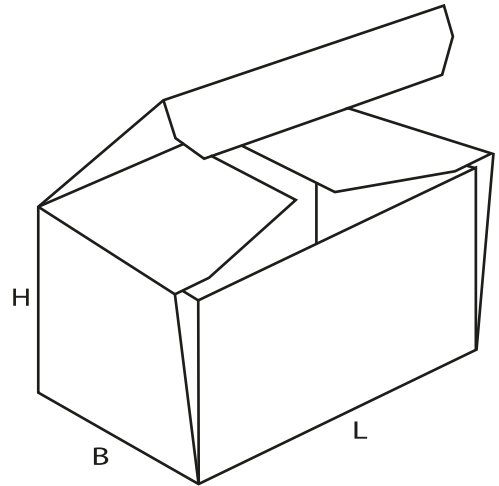
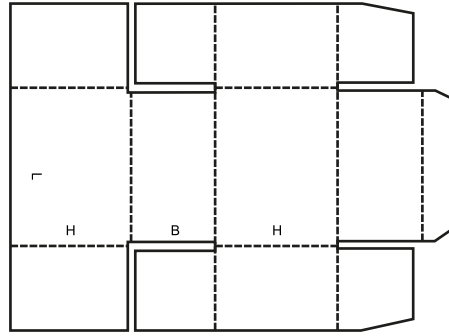
0441 A



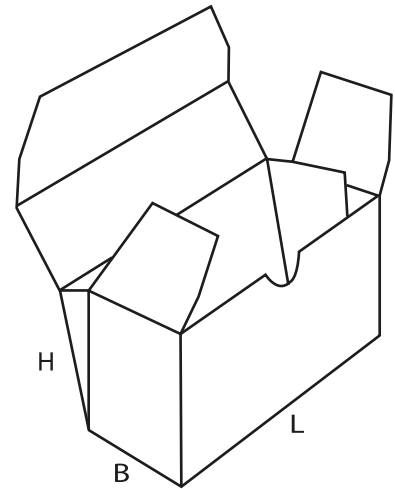
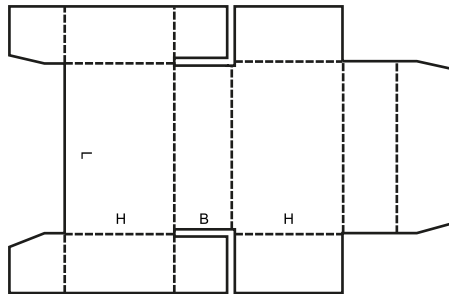
0442 M



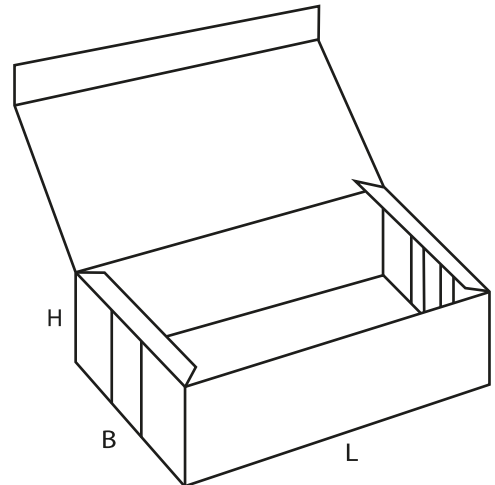
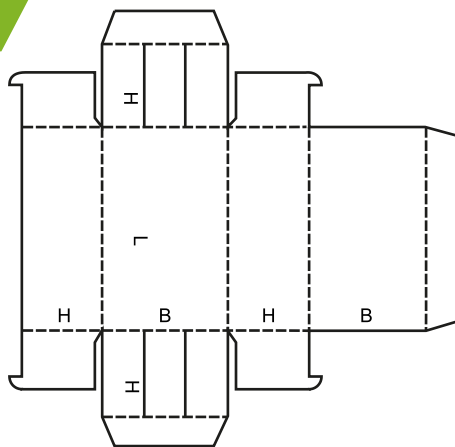
0443 M



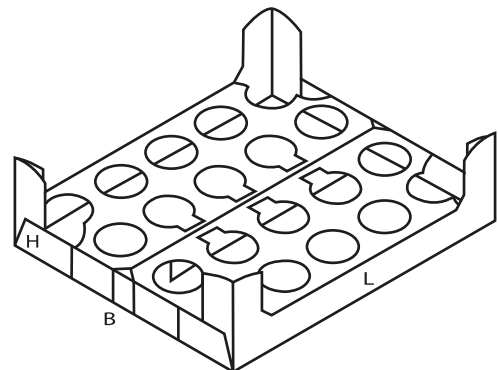
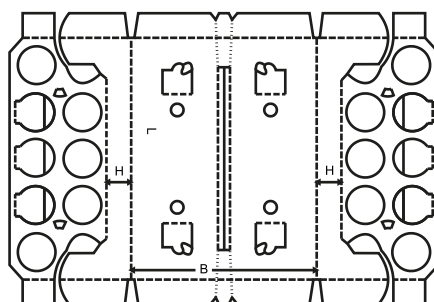
0444 M



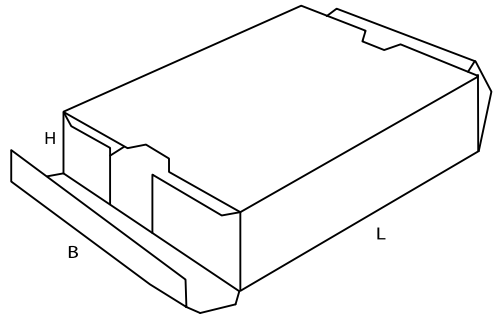
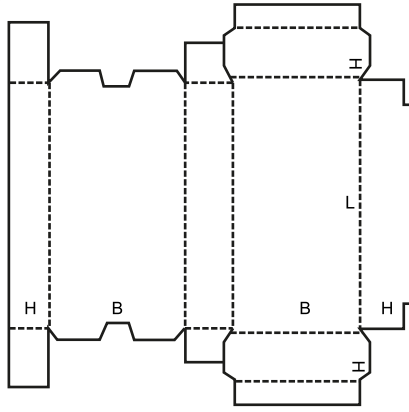
0445 M



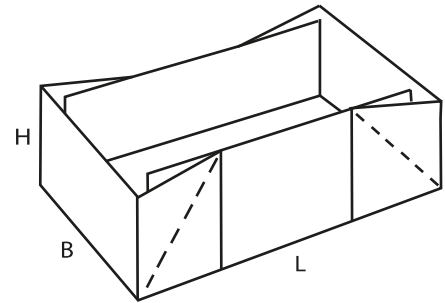
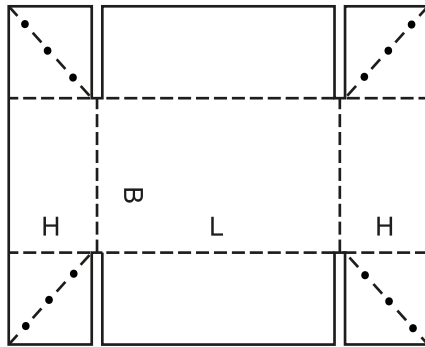
0446 A



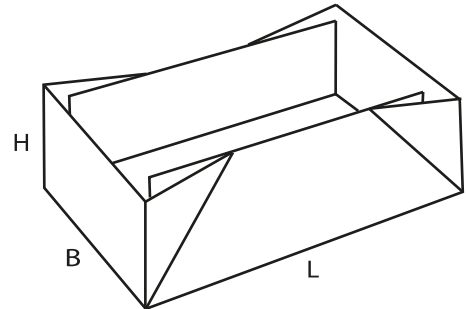
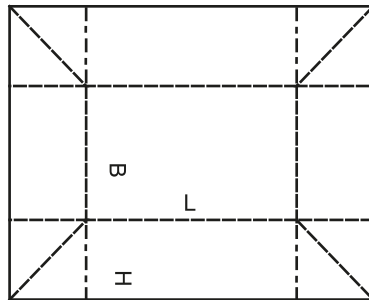
0447 M



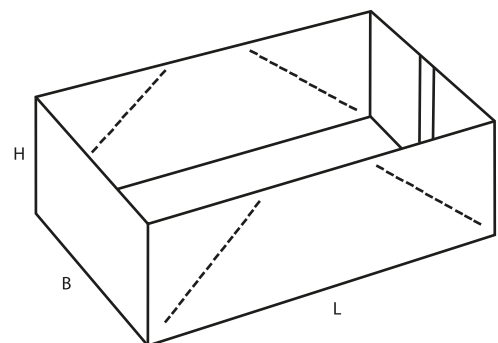
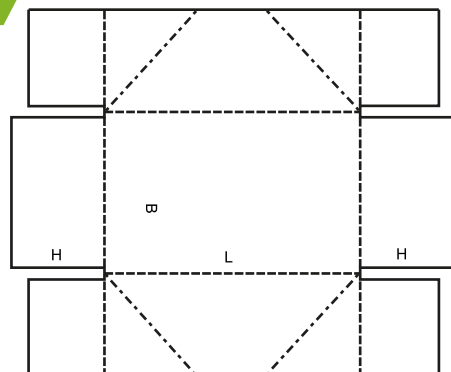
0448 M



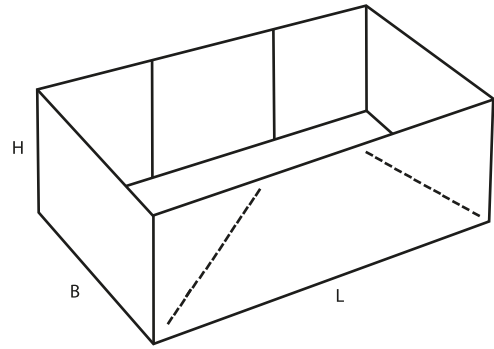
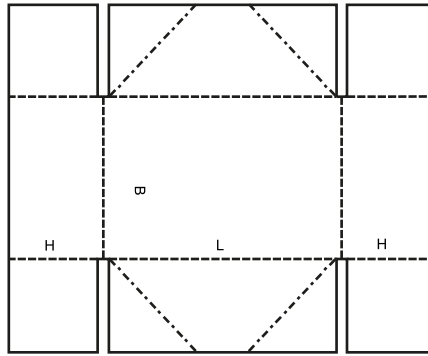
0449 M



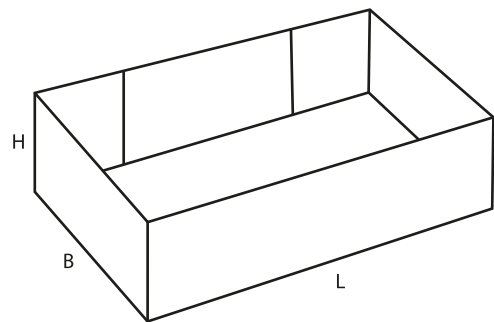
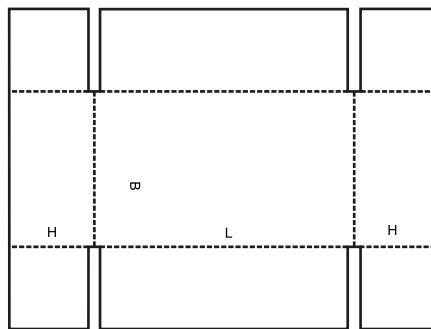
0450 M



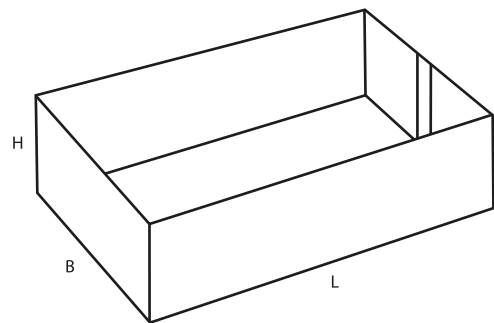
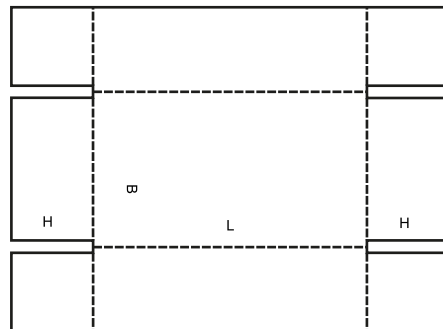
0451 M



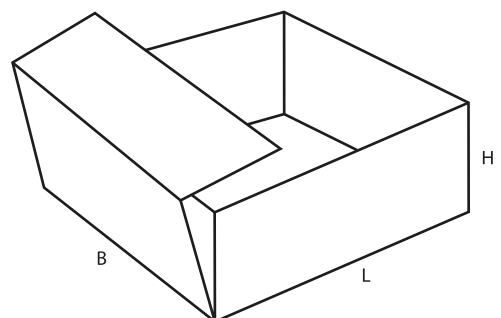
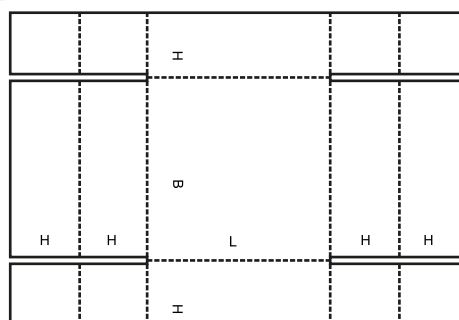
0452 A



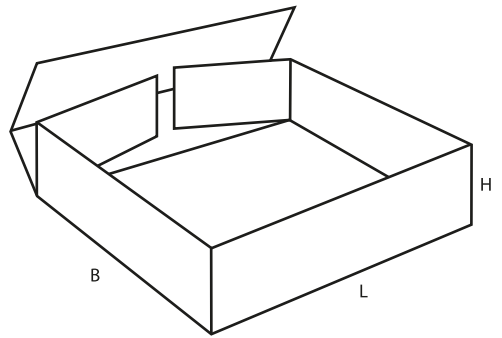
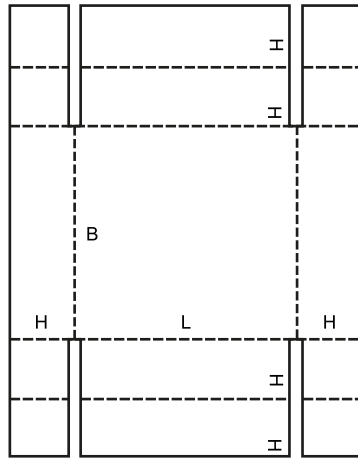
0453 A



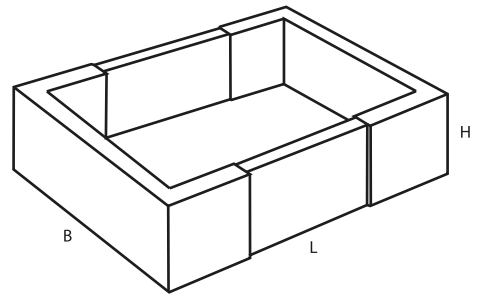
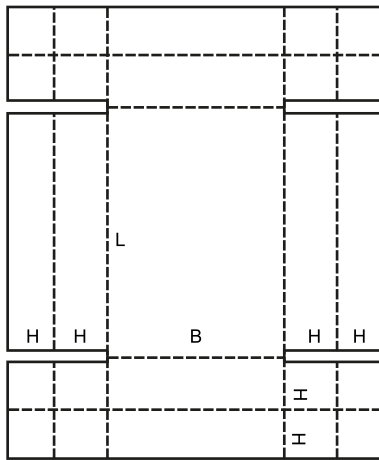
0454 M



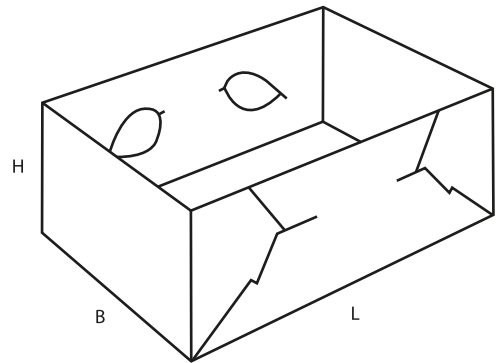
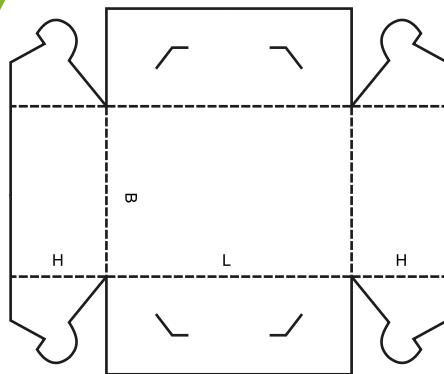
0455 M



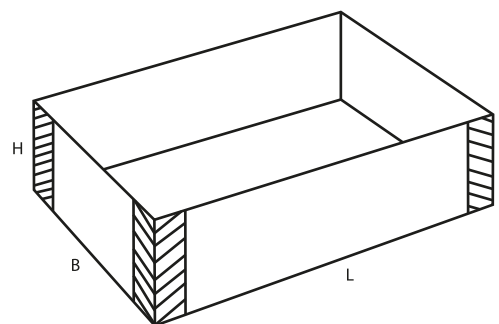
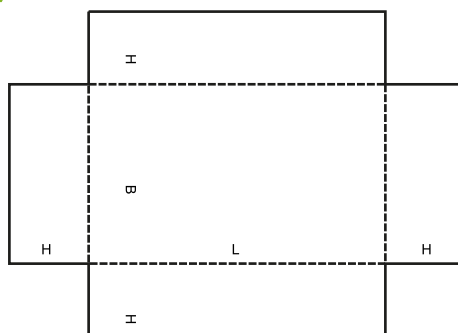
0456 M



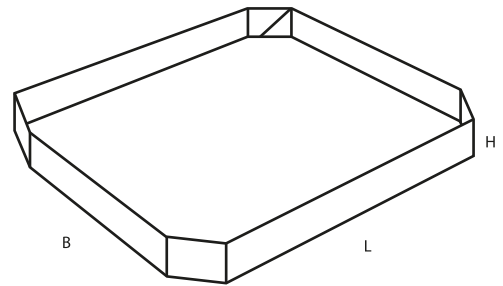
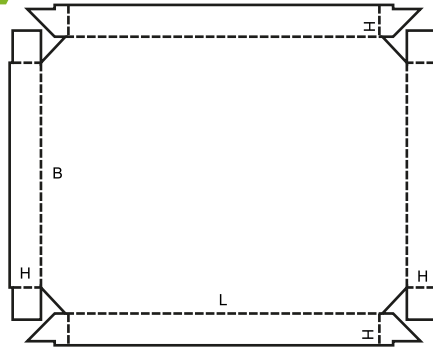
0457 M



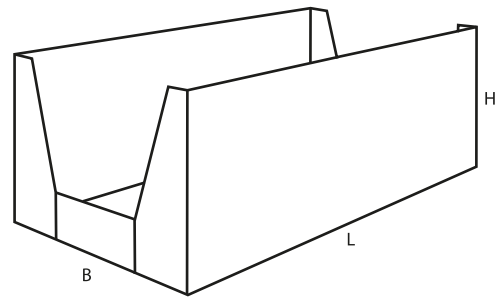
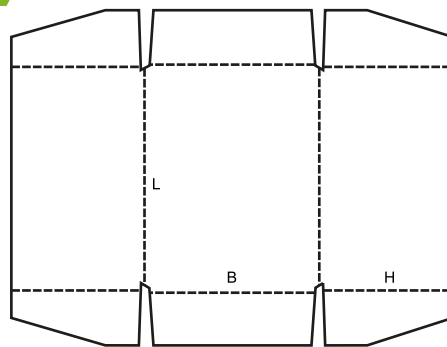
0458 M



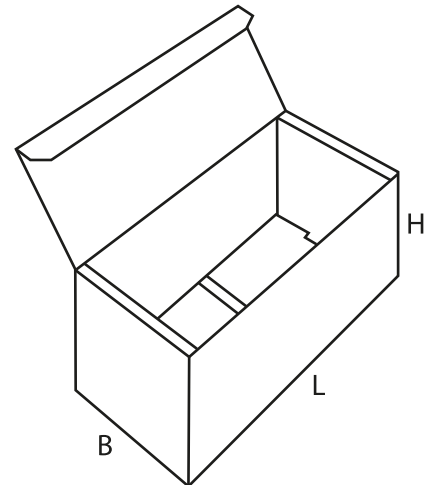
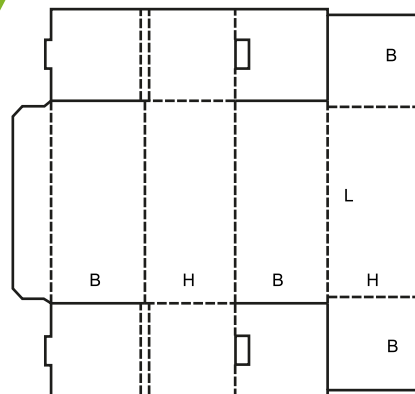
0459 A



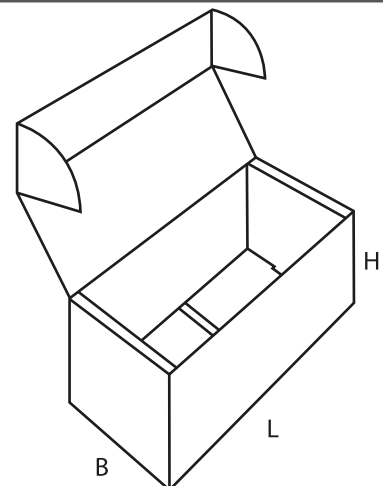
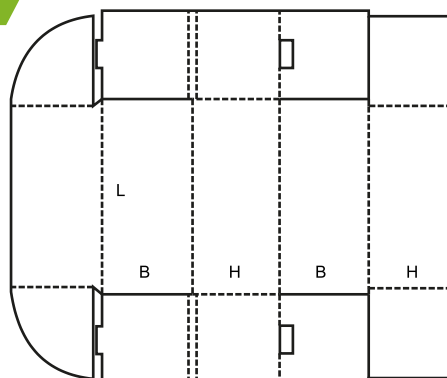
0460 A



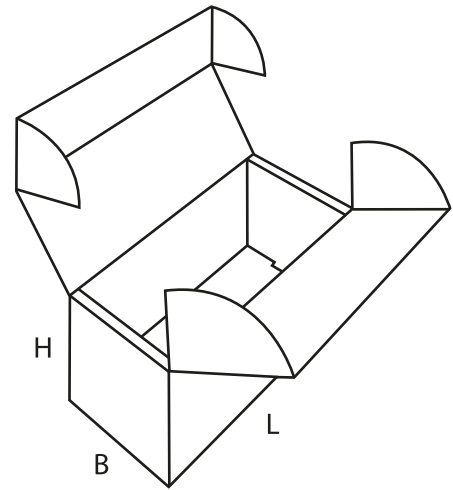
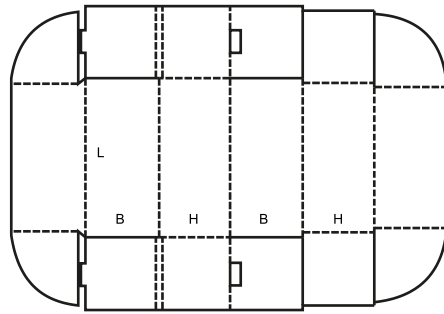
0470 M



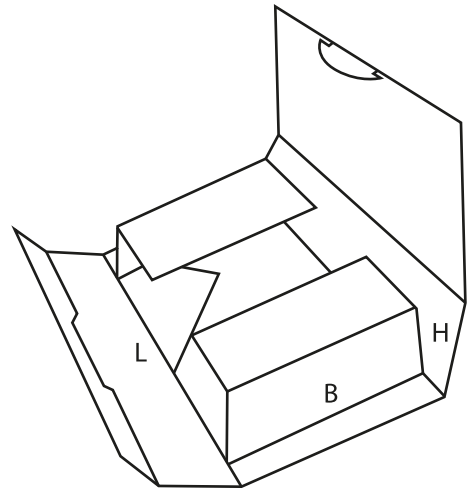
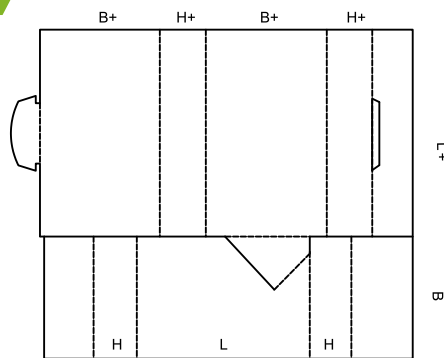
0471 M



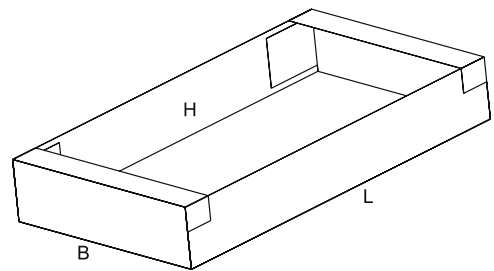
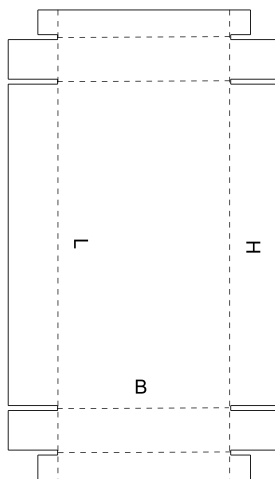
0472 M



0473 M



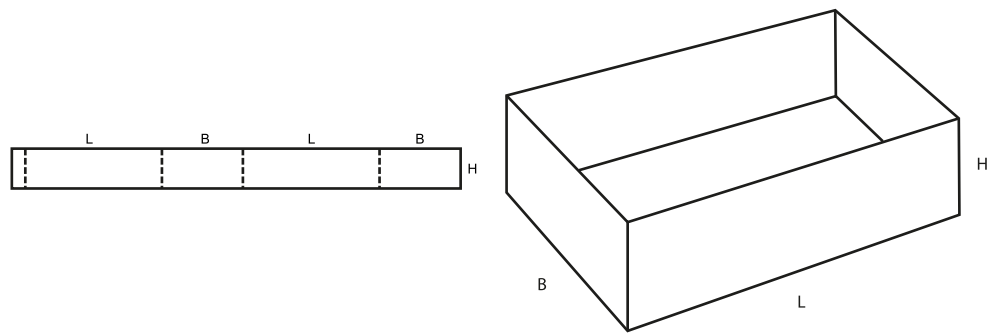
0480 A



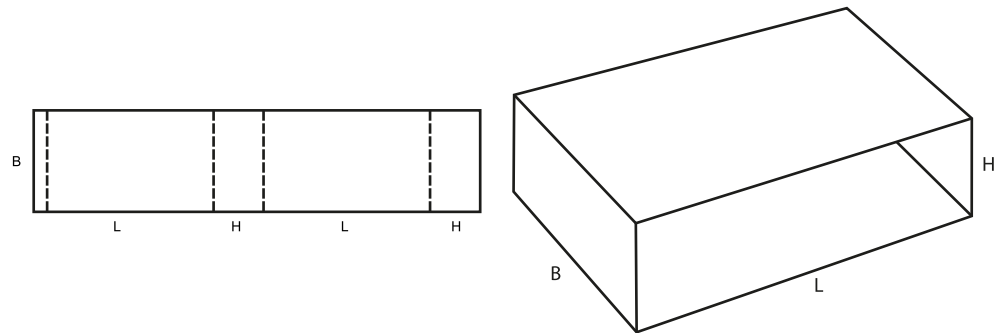
0500

Cajas de tipo deslizante: constan de varias piezas de forros interiores y fundas que deslizan en diferentes direcciones uno dentro de otro. Este grupo incluye también fundas exteriores para otras cajas.

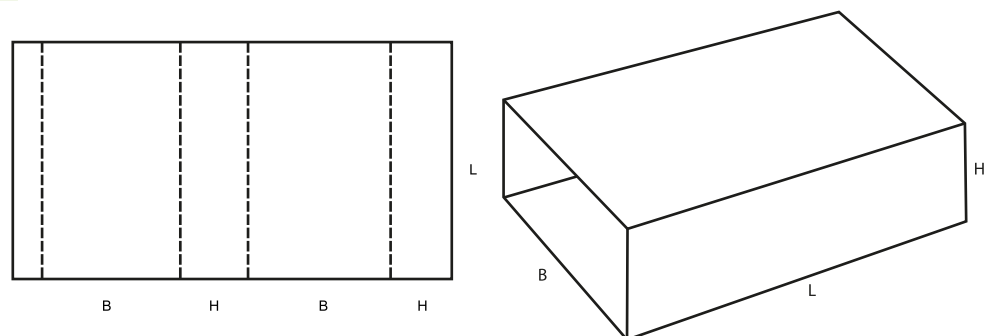
0501 M



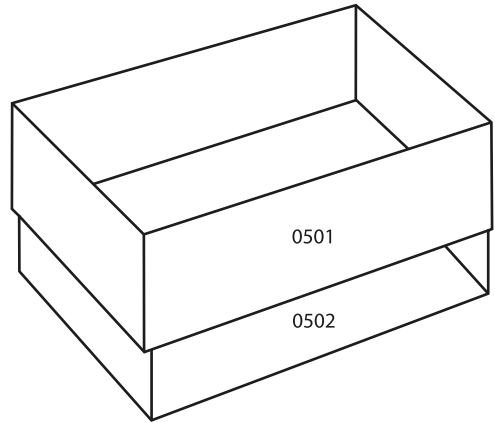
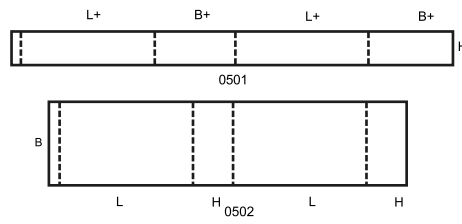
0502 M



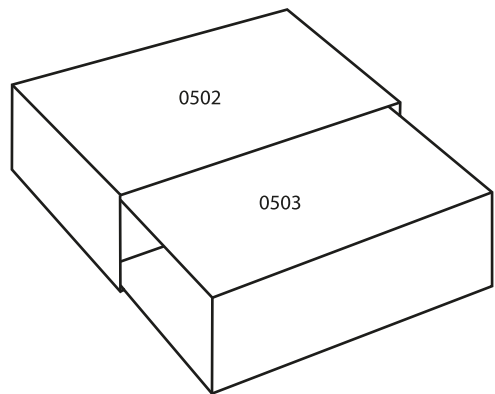
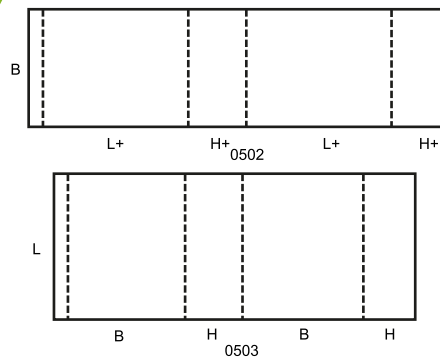
0503 M



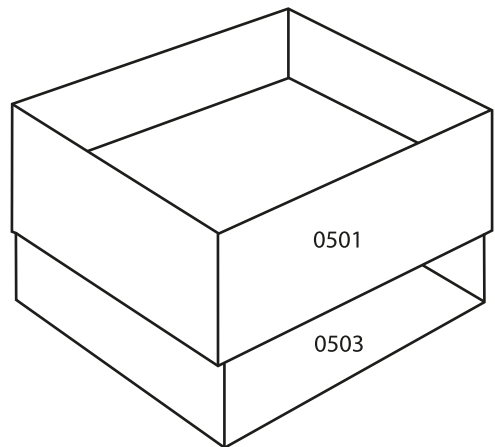
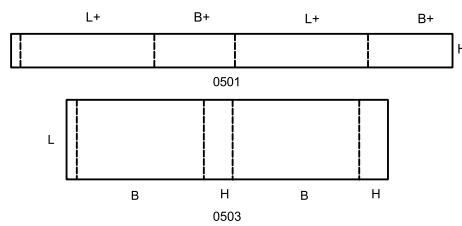
0504 M



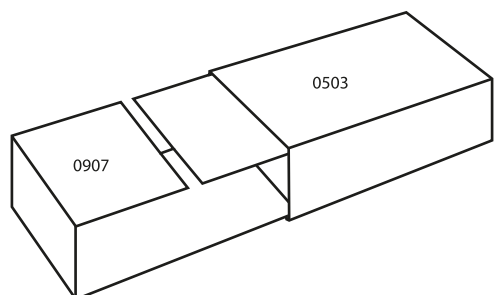
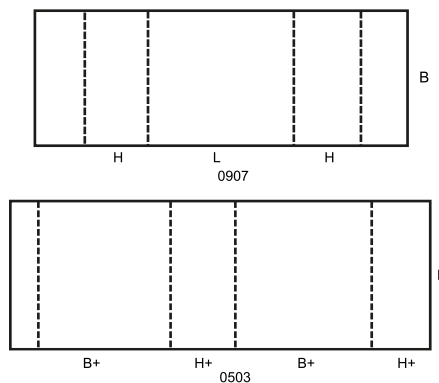
0505 M



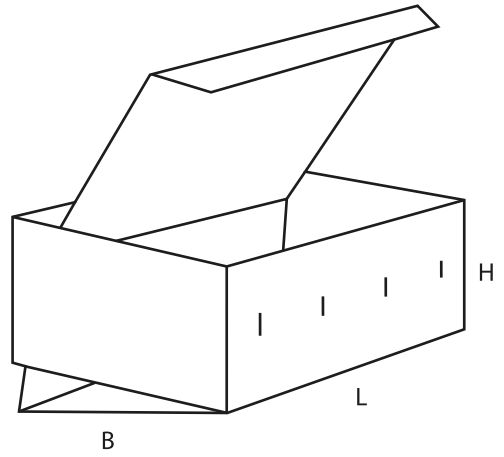
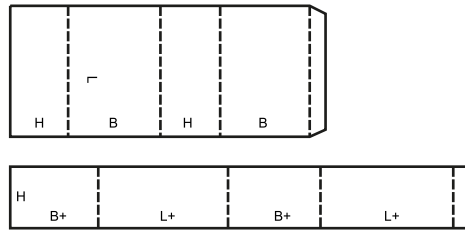
0507 M



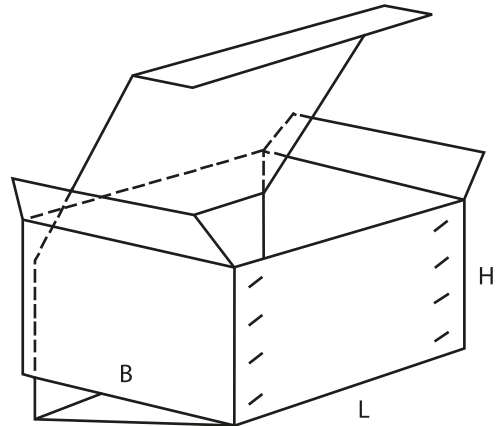
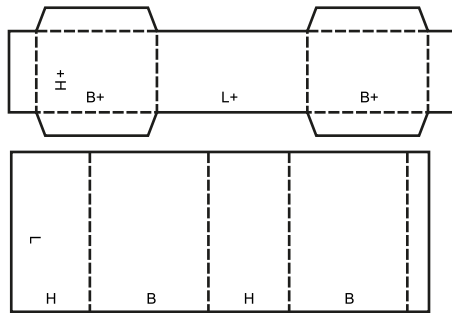
0509 M



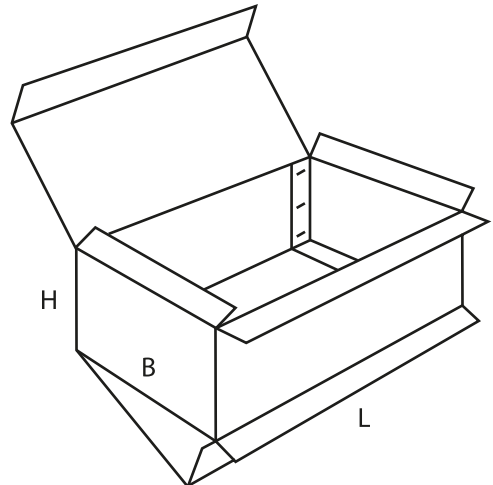
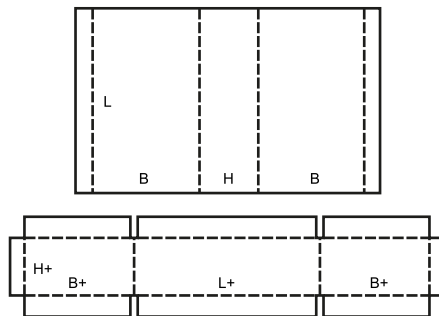
0510 M



0511 M

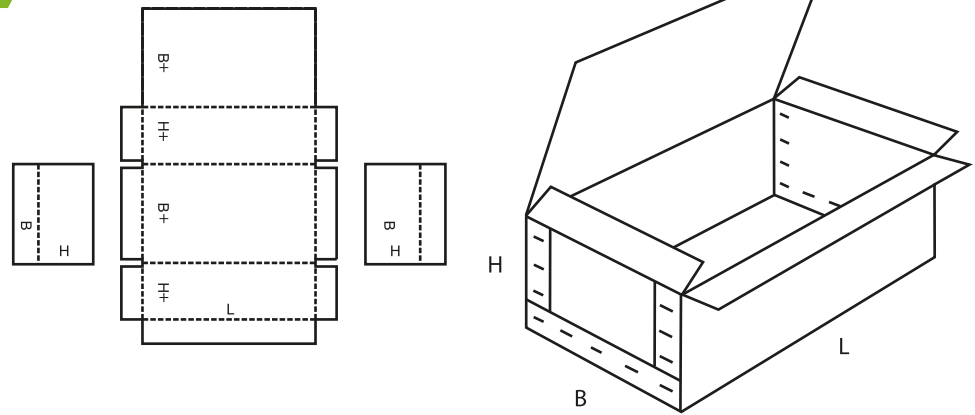


0512 M

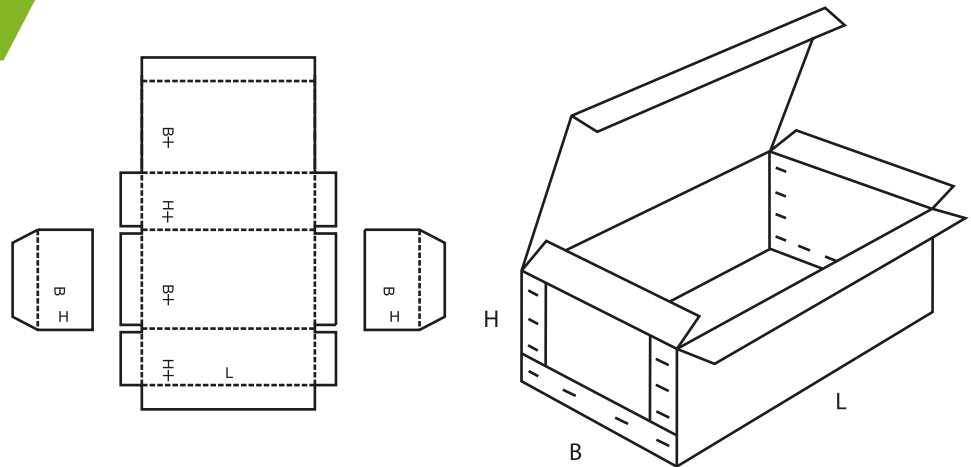


Cajas de tipo rígidas: formadas por dos piezas separadas, para los extremos y un cuerpo; requieren un grapado u otra operación similar antes de que puedan utilizarse.

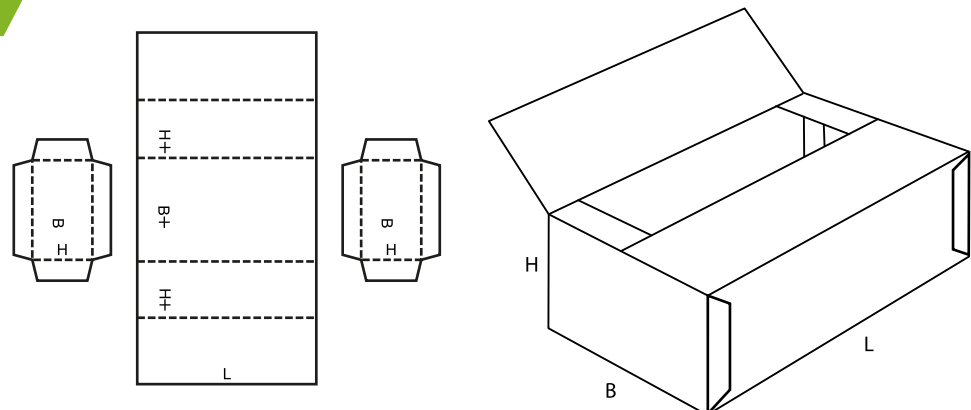
0601 A



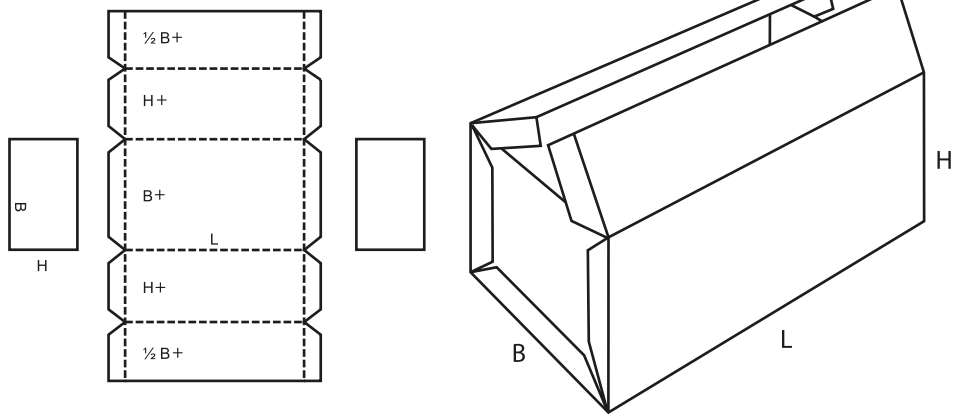
0602 A



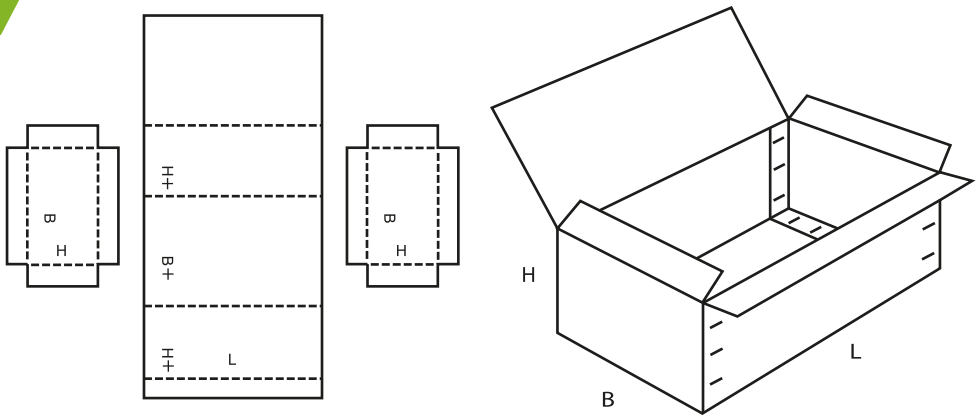
0605 A



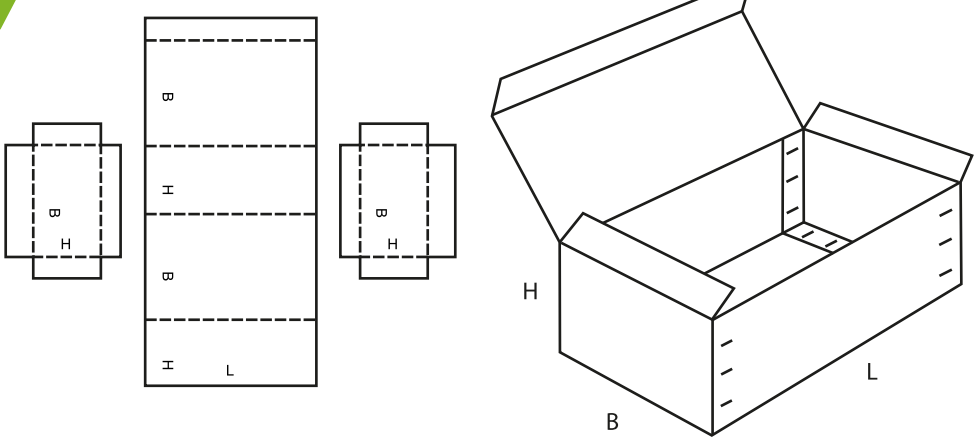
0606 A



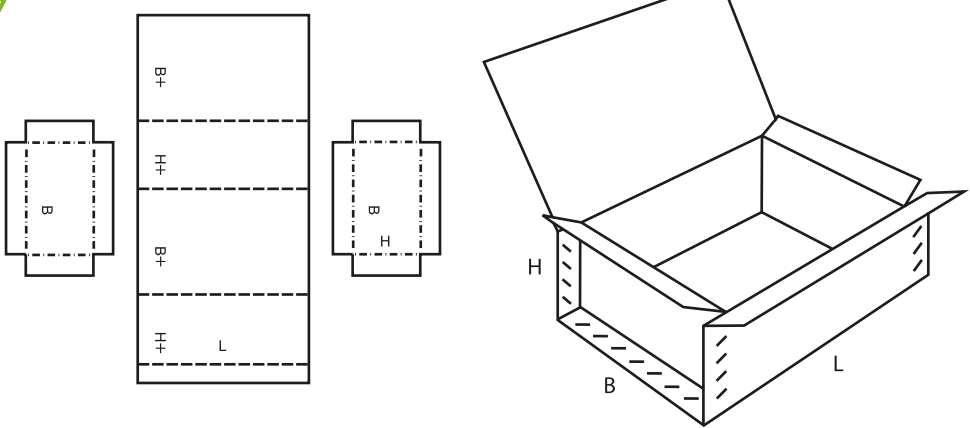
0607 A



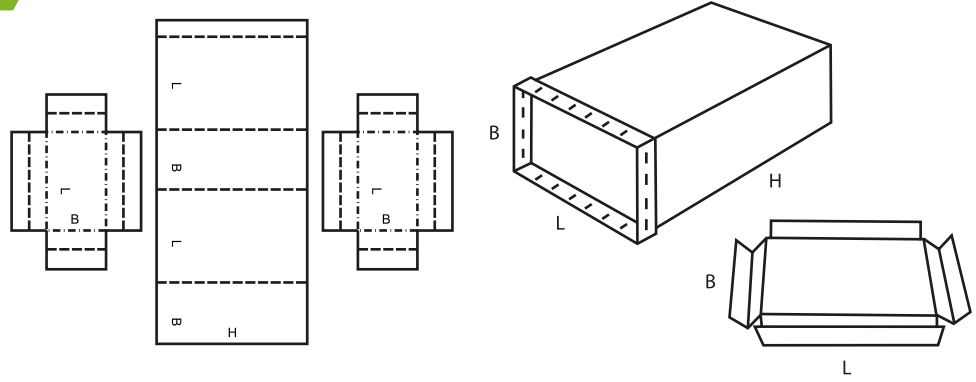
0608 A



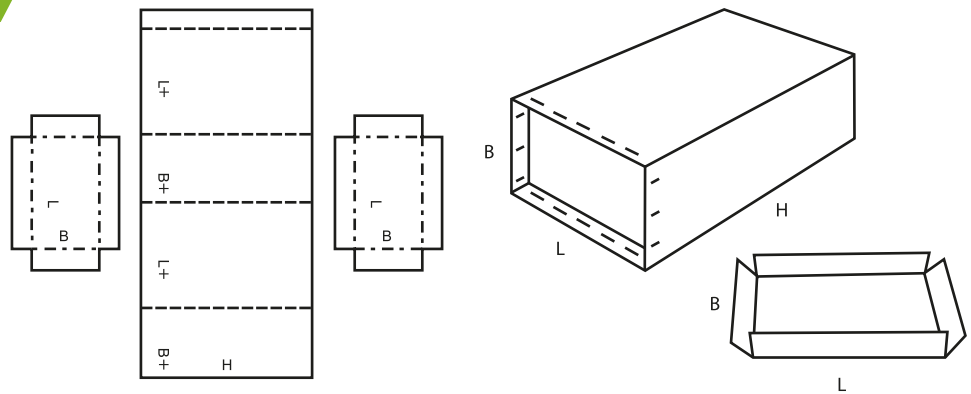
0610 M/A



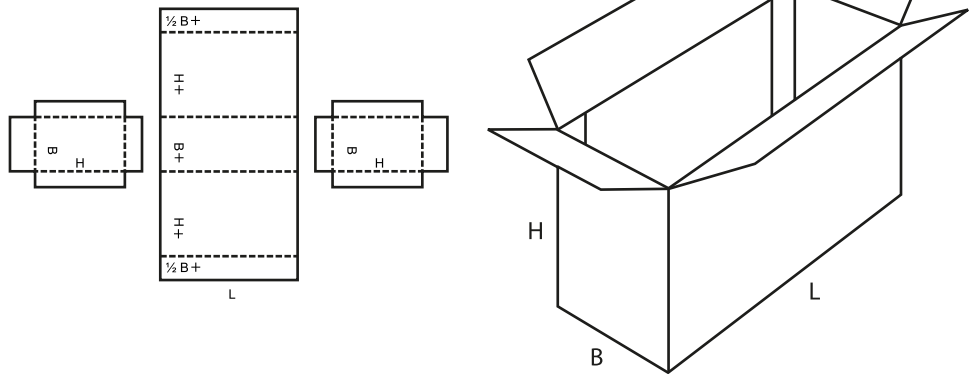
0615 M/A



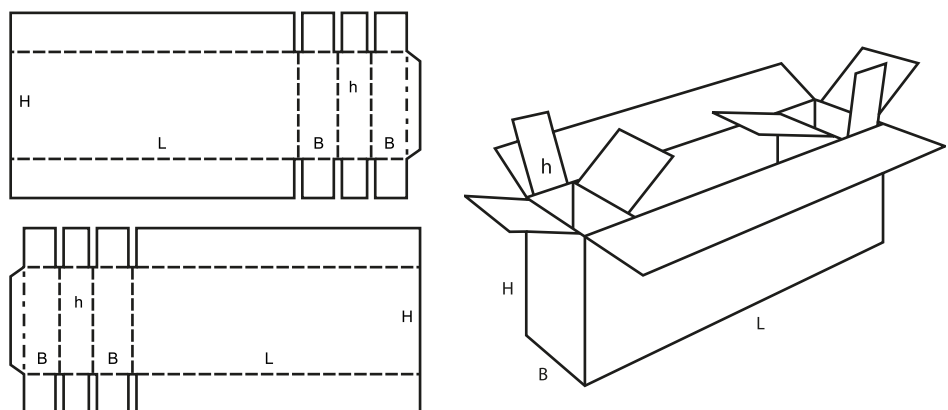
0616 M/A



0620 A

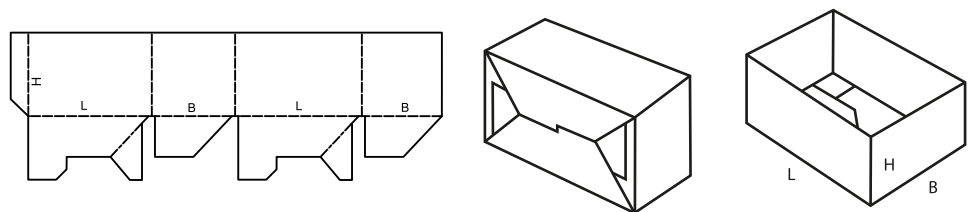


0621 M

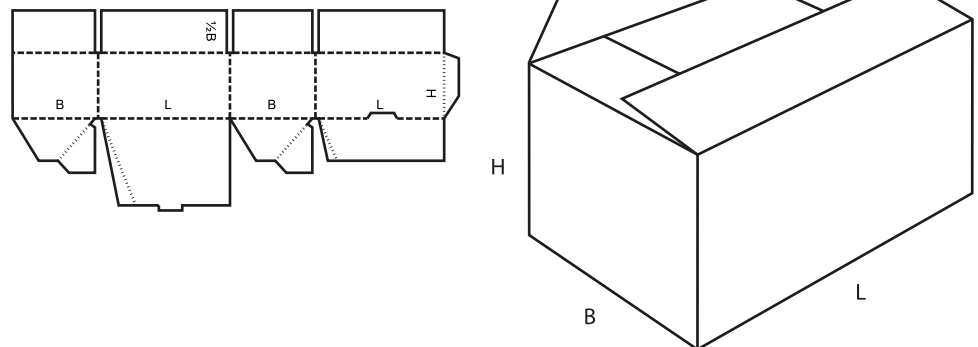


Cajas de encolado rápido: están hechas generalmente de una sola pieza, se entregan extendidas en un plano o plegadas y listas para su utilización por medio de un sencillo montaje.

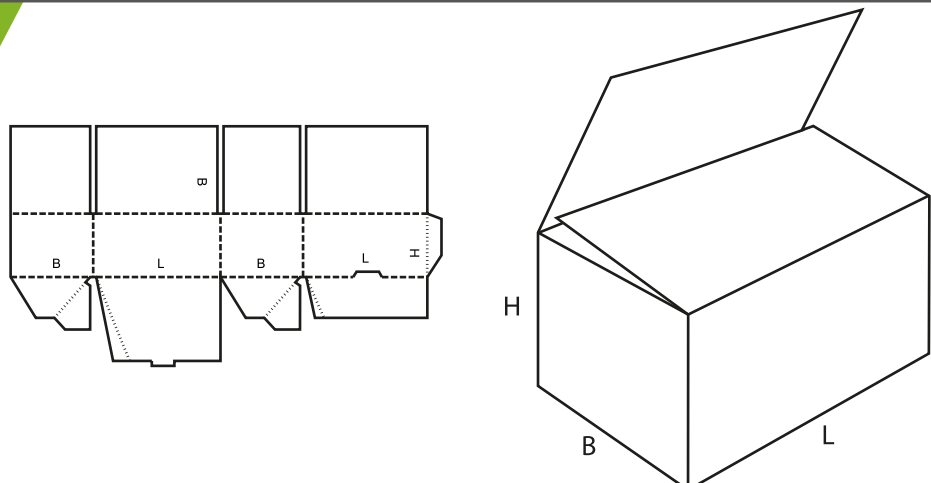
0700 M



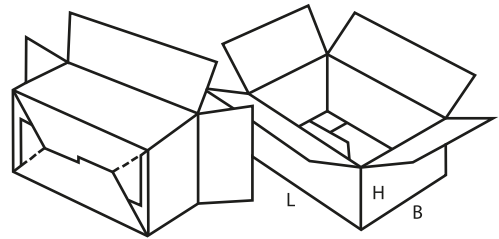
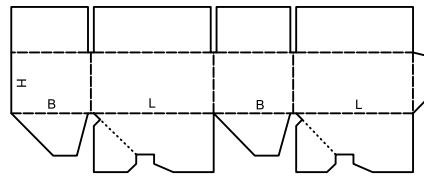
0701 M



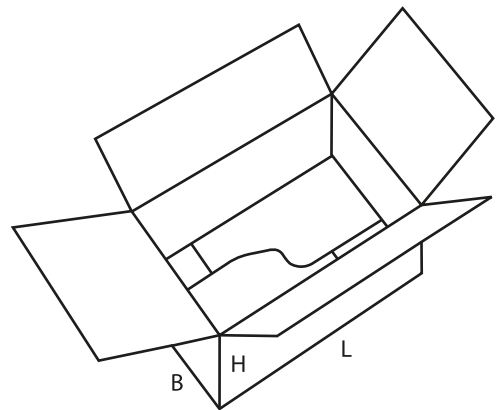
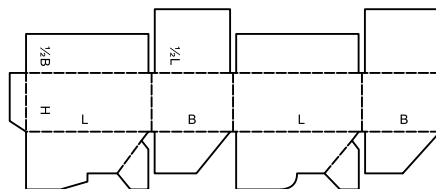
0703 M



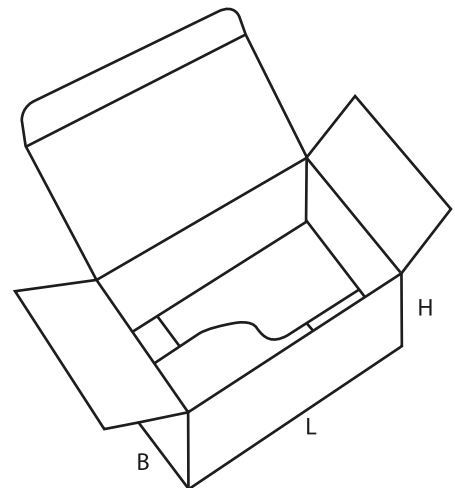
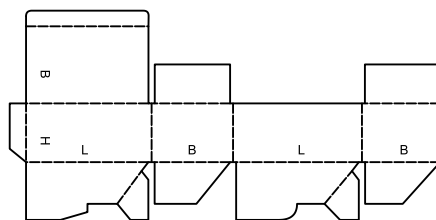
0711 M



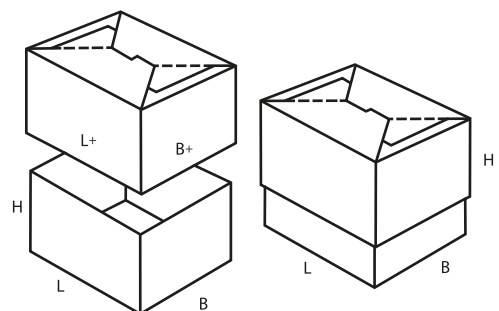
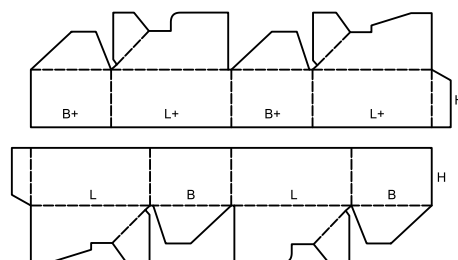
0712 M



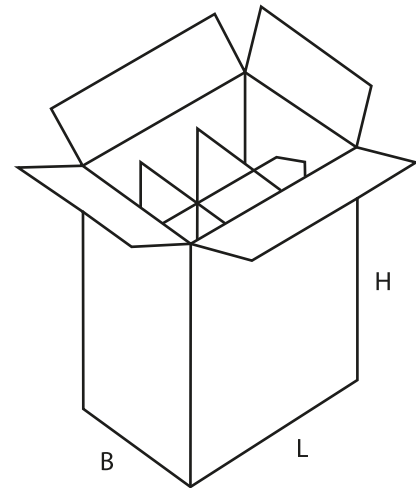
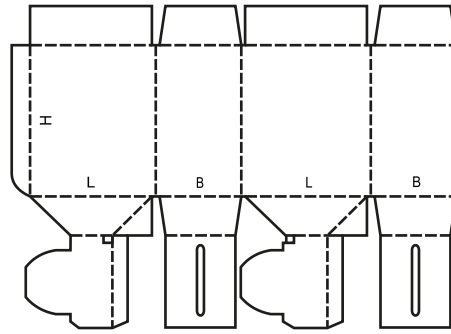
0713 M



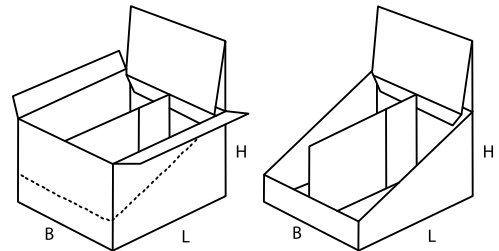
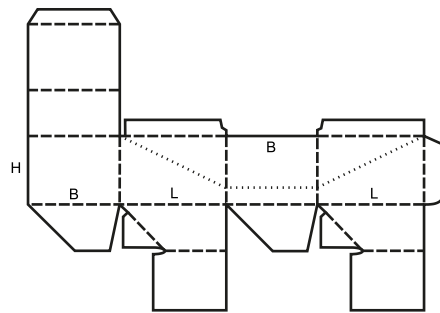
0714 M



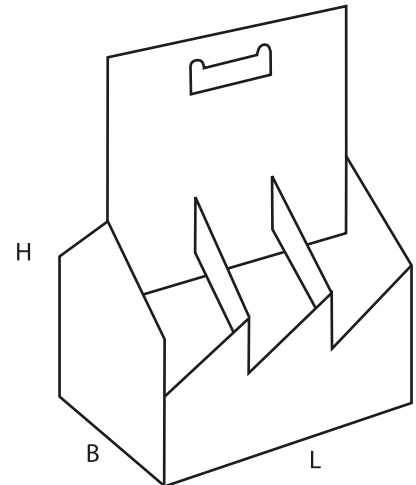
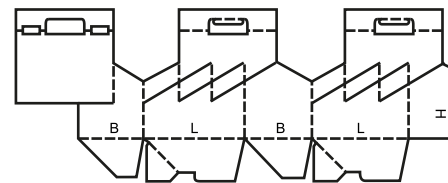
0715 M



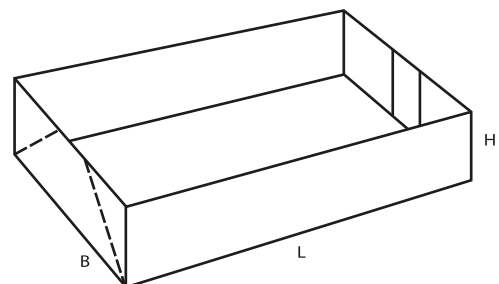
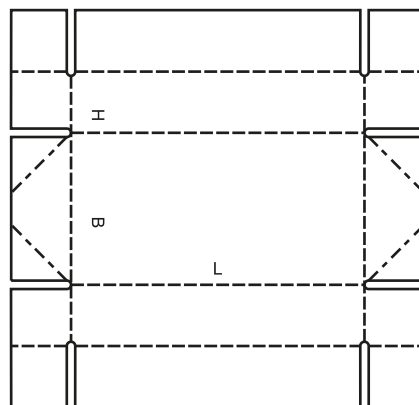
0716 M



0717 M

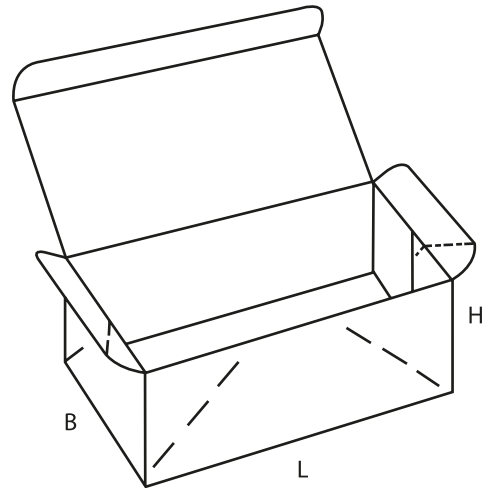
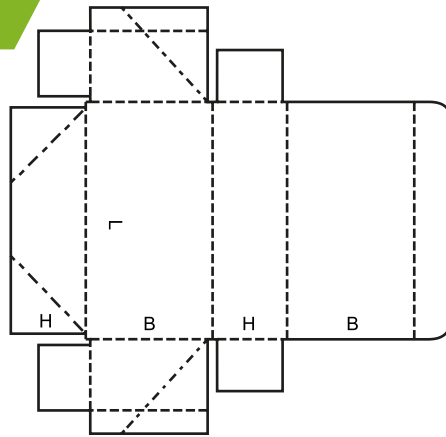


0718 M

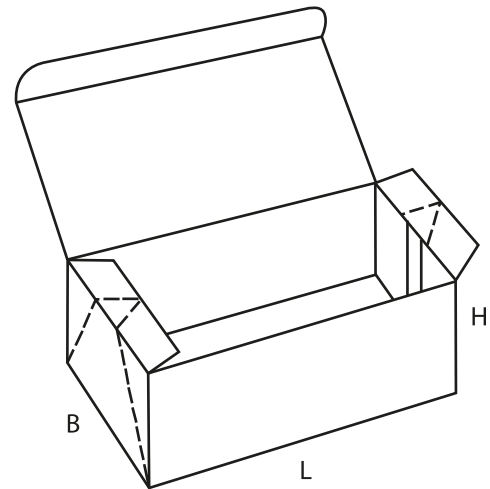
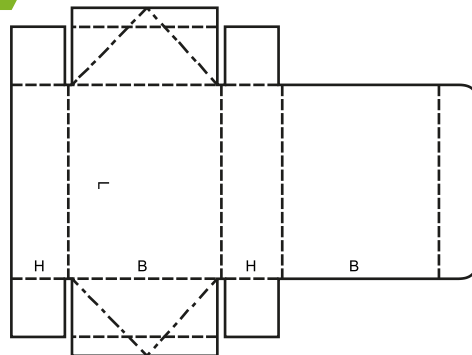


$B \geq 2H$

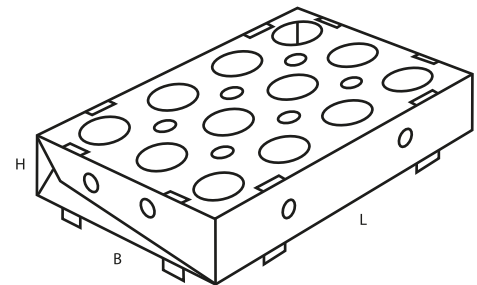
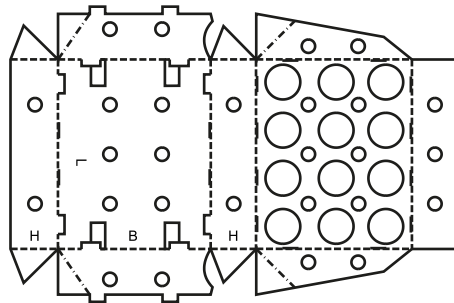
0747 M



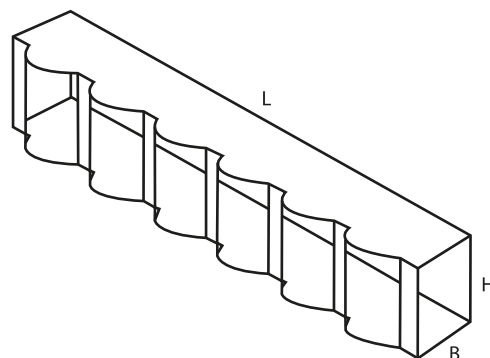
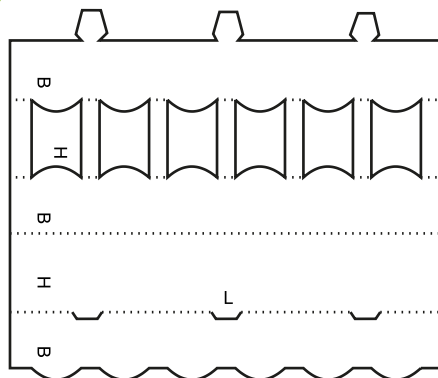
0748 M



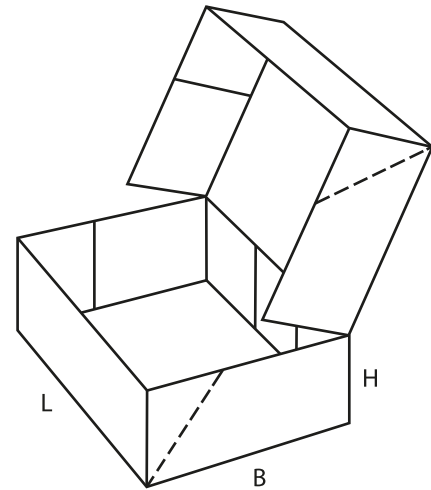
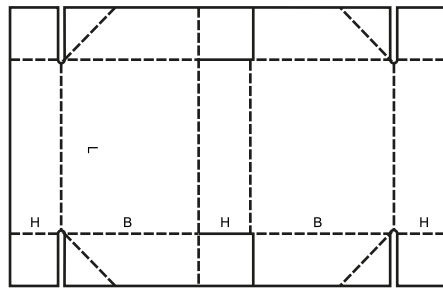
0751 M



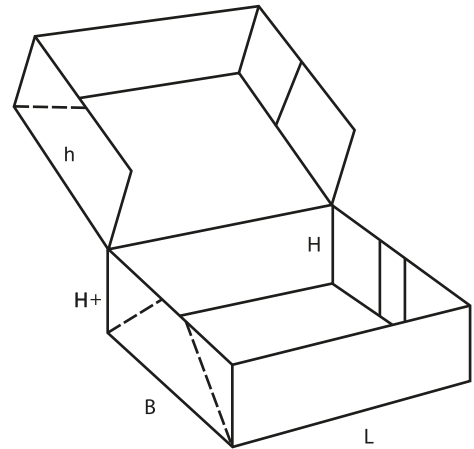
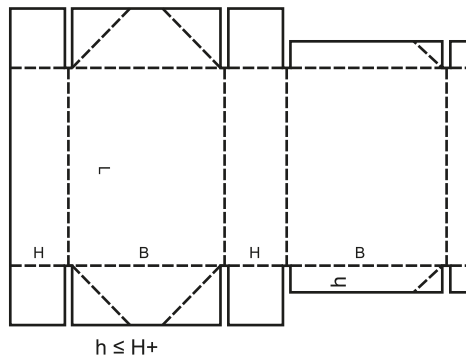
0752 M/A



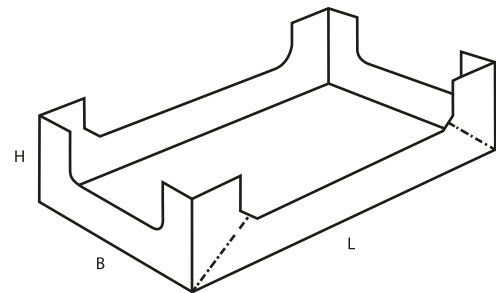
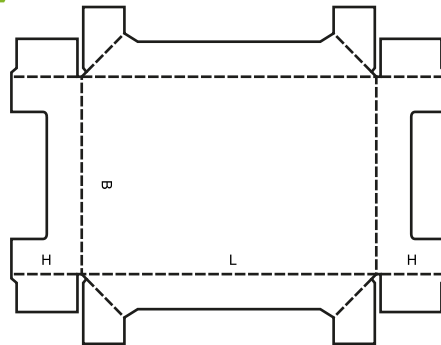
0759 M



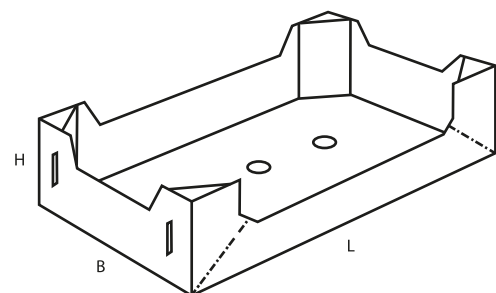
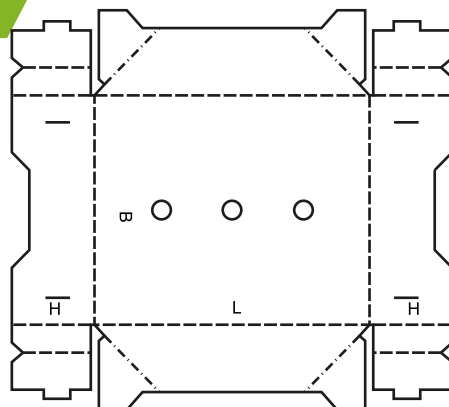
0761 M



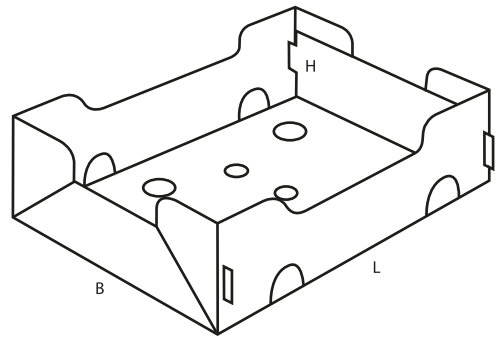
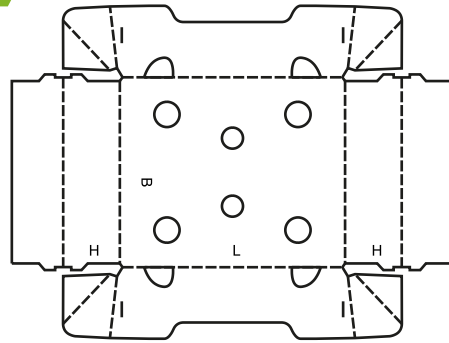
0770 M



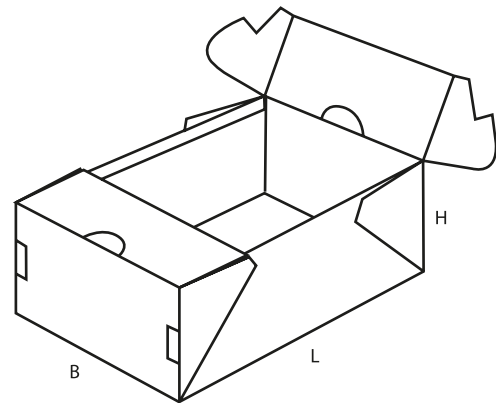
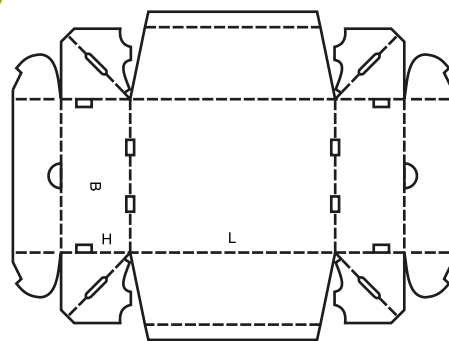
0771 M



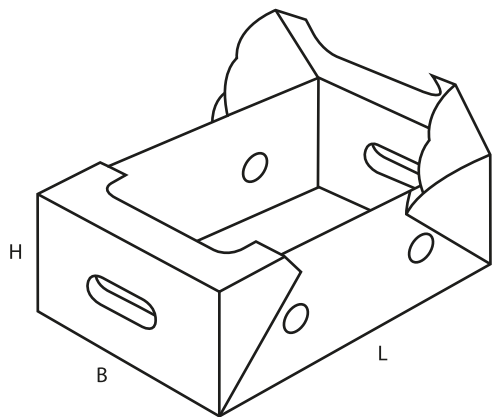
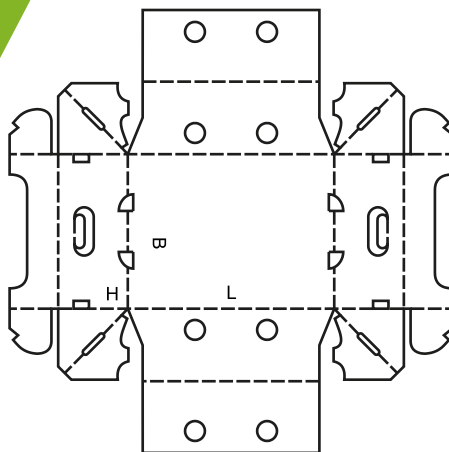
0772 M



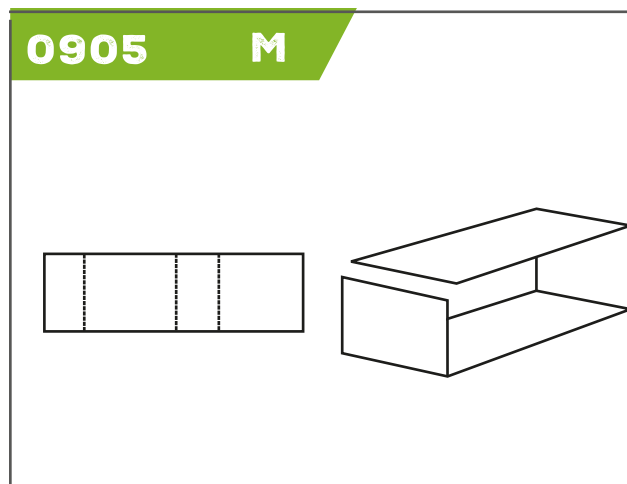
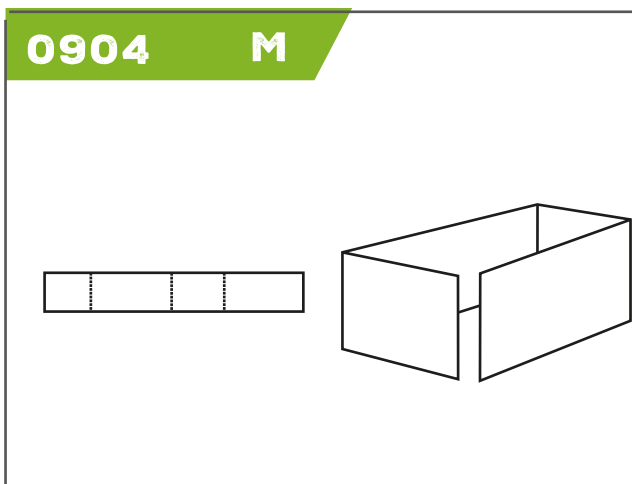
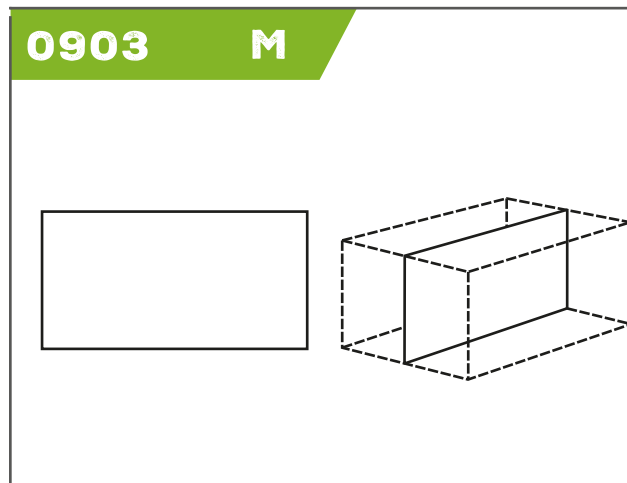
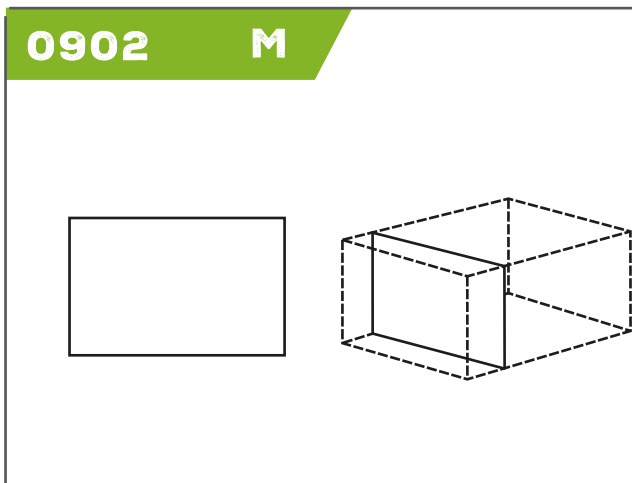
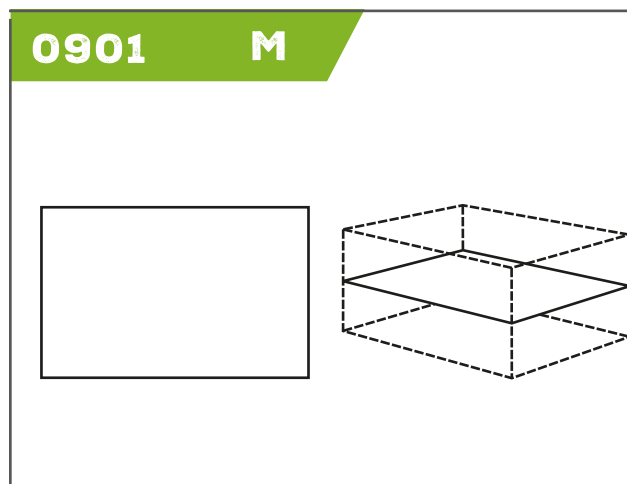
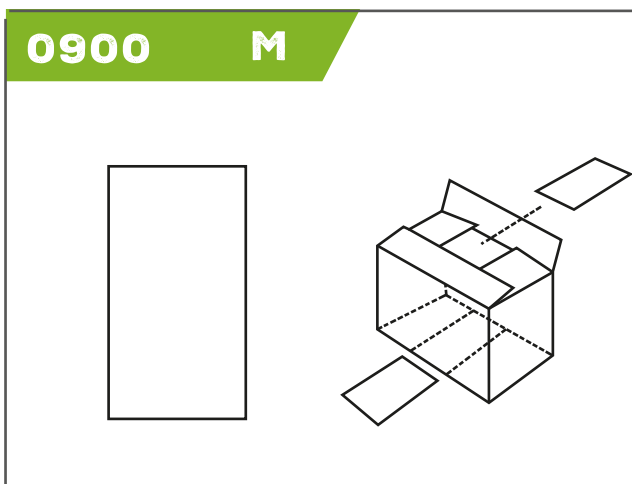
0773 M



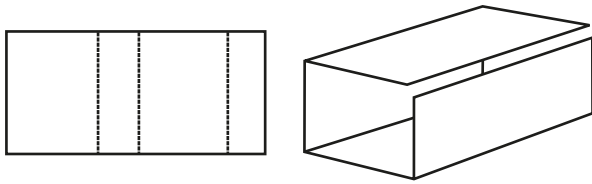
0774 M



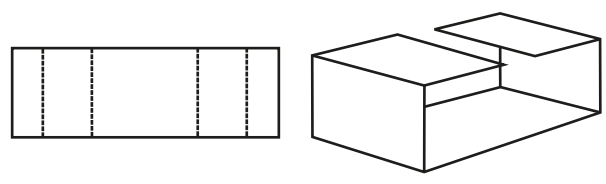
Acondicionadores interiores : como forros, refuerzos, casilleros, divisiones interiores, tanto si se ajustan a un modelo de caja o como piezas sueltas. El número de piezas de los acondicionadores interiores mostrados es arbitrario y puede aumentarse o disminuirse de acuerdo con las necesidades.



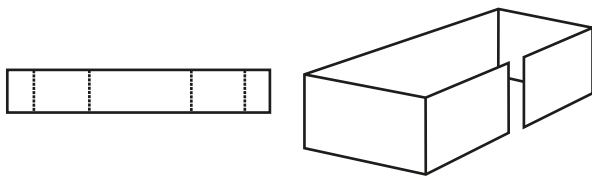
0906 M



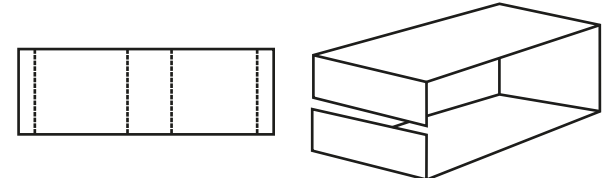
0907 M



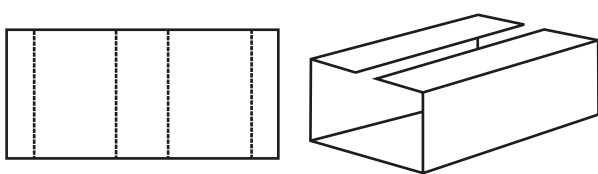
0908 M



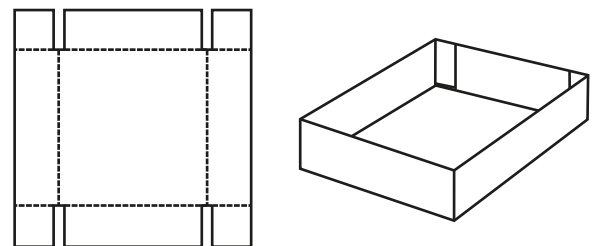
0909 M



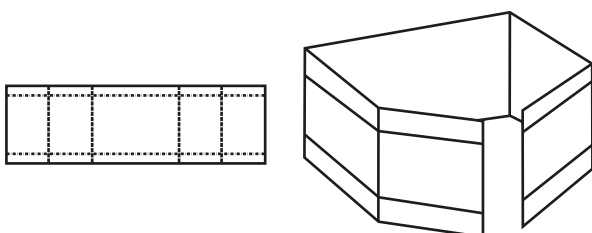
0910 M



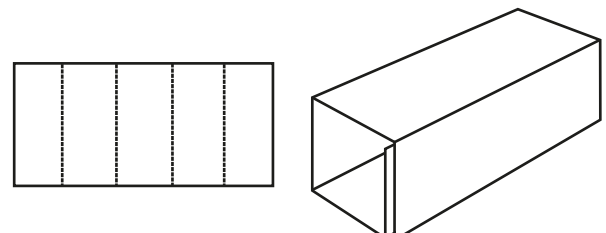
0911 M



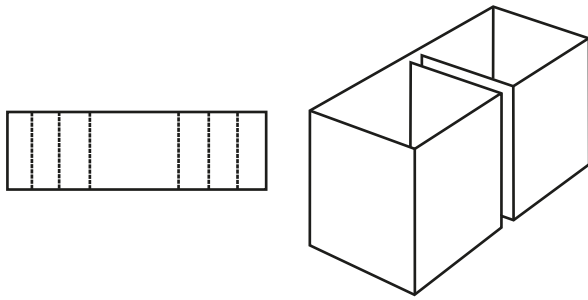
0913 M



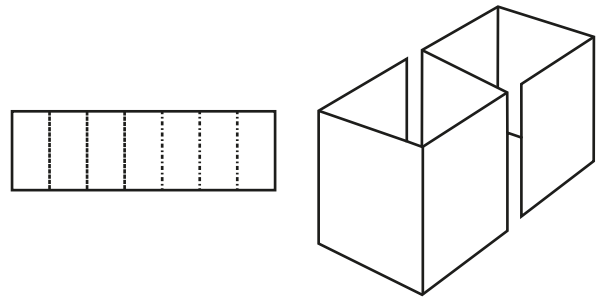
0914 M



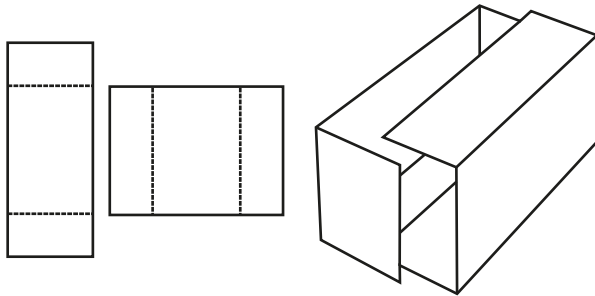
0920 M



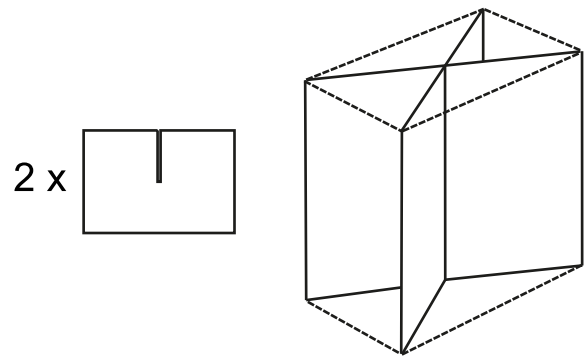
0921 M



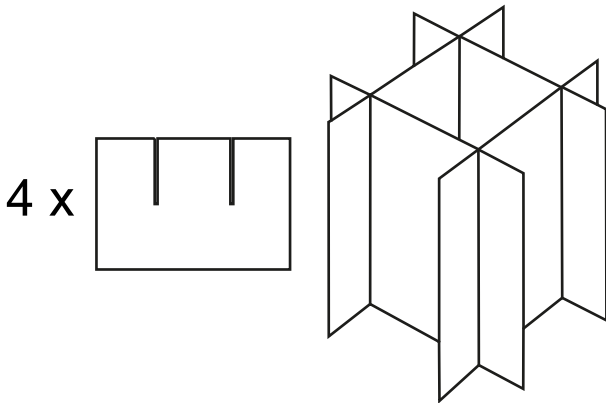
0929 M



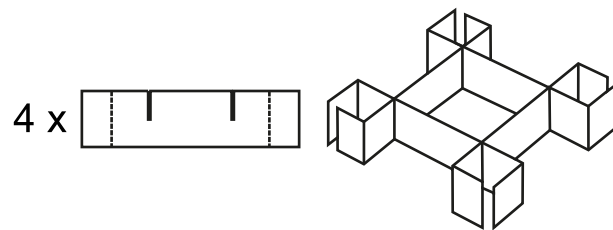
0930 M



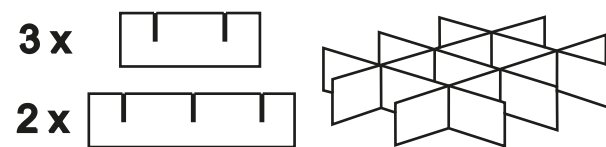
0931 M



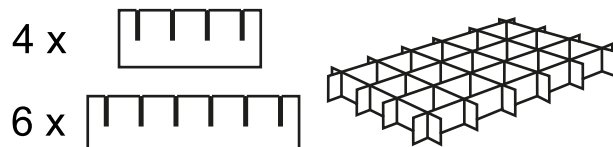
0932 M



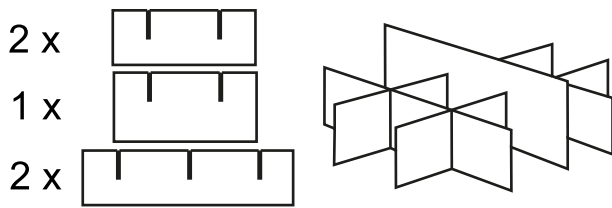
0933 M



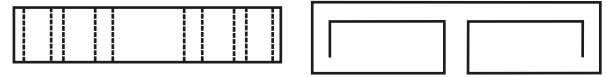
0934 M



0935 M



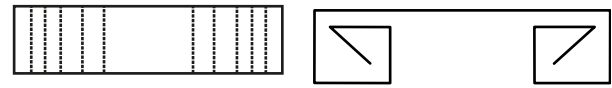
0940 M



0941 M



0942 M



0943 M



0944 M



0945 M



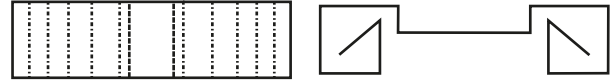
0946 M



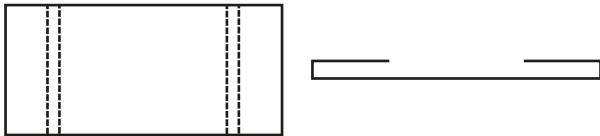
0947 M



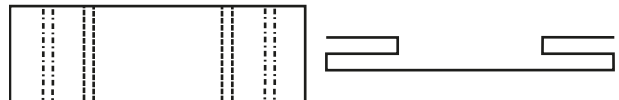
0948 M



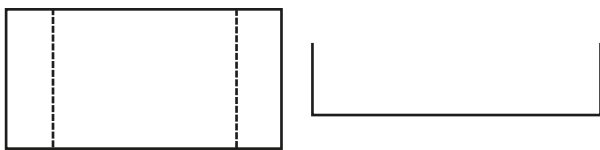
0949 M



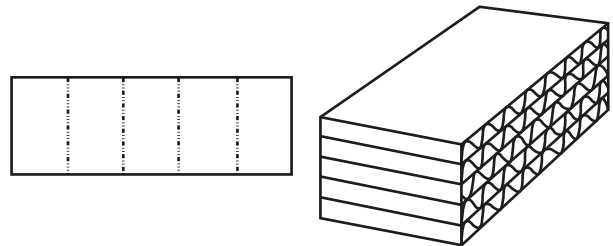
0950 M



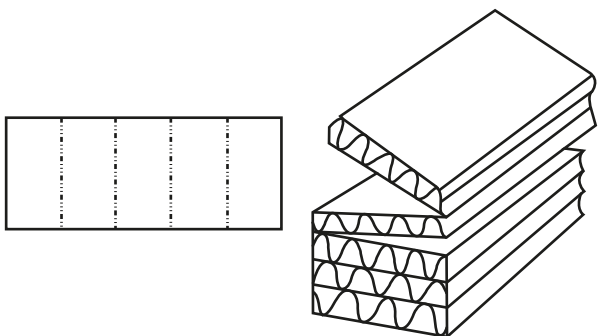
0951 M



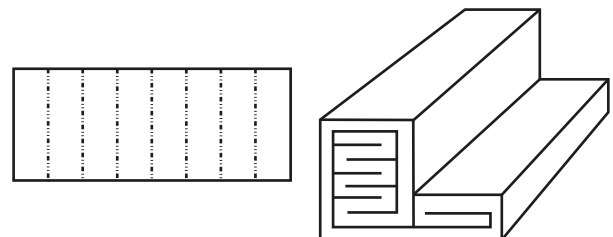
0965 M



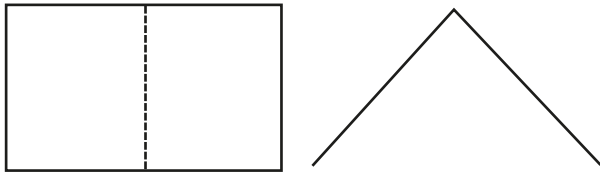
0966 M



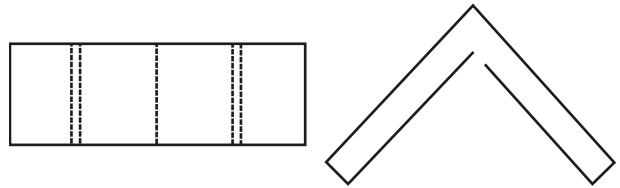
0967 M



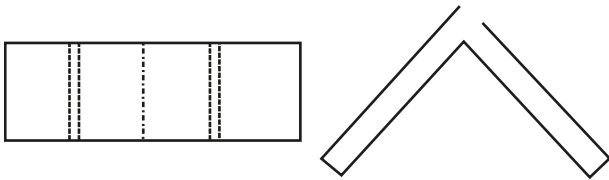
0970 M



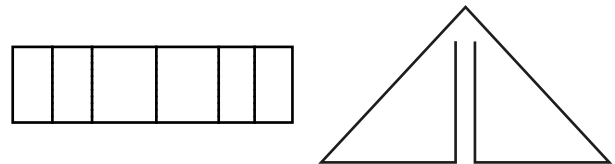
0971 M



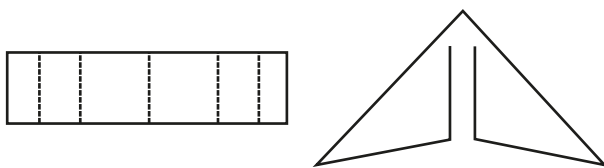
0972 M



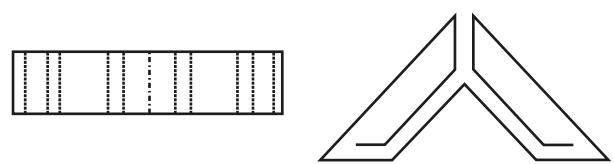
0973 M



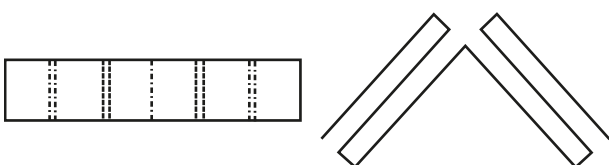
0974 M



0975 M



0976 M





 +56 9 64946346 / +56 9 31873640

 contacto@ehlan.cl / cotizaciones@ehlan.cl

 Los Olmos 2438, La Pintana - Santiago.